



# ARCHITECTURAL & URBAN LANDSCAPING



COVER PAGE PHOTO

Franklin D. Roosevelt Four Freedoms State Park, New York, NY, USA  
**WHITE MOUNT AIRY GRANITE®**, Flamed finish





Building a naturally  
sustainable future → together







# Table of Contents

OUR STORY	8
OUR QUARRIES	12
OUR VALUES	16
APPLICATIONS	17
BLACK STONES	18
Cambrian Black® granite	20
Saint Henry Black™ granite	22
American Black® & American Mist™ granites	24
NEUTRAL STONES	26
Kodiak Brown™ granite	28
Laurentian Green™ granite	30
Picasso™ granite	32
Saint Pierre™ limestones	34
Caledonia™ granite	36
Indiana limestones	38
Saint Clair™ marbles	40
French limestones	42
GREY STONES	48
Titanium Pearl™ granite	50
Barre Gray® granite	52
Stansted Grey® granite	54
Greene County Granite®	56
Saint Sebastien™ granite	58
WHITE STONES	60
Jay White™ granite	62
Bethel White® granite	64
White Mount Airy Granite®	66
Georgia marbles	68



Washington Union Station, Washington, DC, USA  
**BETHEL WHITE®** granite



Together We  
Build Landmarks  
for Humanity







Empire State Building Installation



# Success is built on passion.

Polycor is the world's leading natural stone manufacturer. By joining forces with other industry pioneers, we provide our customers with centuries of stone expertise. Our vision is to establish new foundations of global leadership by setting the standard for excellence in sustainable natural stone. Our products are built to last so that future generations can continue to fall in love with natural stone.




A large, layered stone wall, likely a dam or retaining wall, made of light-colored, rectangular stone blocks. The wall is situated next to a body of water, which reflects the wall and the sky. The water is a deep teal color. The sky is not visible, but the lighting suggests a bright day. The overall scene is a close-up of the stone wall, showing its texture and the way the water interacts with it.

# By the Earth, for the Earth

Our naturally sustainable stones allow us to embrace our duty to the world around us with passion. As a business, we take care to have a positive influence, and we strive to carve a path that leaves the world a little better off than before.



A large, textured concrete wall, possibly a dam or a quarry wall, dominates the upper half of the image. The wall is composed of many vertical concrete blocks or panels, some of which are slightly misaligned, creating a rough, layered appearance. In the center of the wall, there is a large, rectangular opening or gap. The wall is reflected in a calm body of water at the bottom of the frame, which has a greenish-blue tint. The overall scene is industrial and naturalistic.

# Naturally Sustainable™

From our quarry workers to the members of our executive committees, environmentally-conscious practices are a foundational part of Polycor's operations and green industry business model.





# Global With a Local Footprint











CHARMOT™ - FRENCH LIMESTONE  
VALANGES™ - FRENCH LIMESTONE  
MASSANGIS CLAIR NUANCÉ™ - FRENCH LIMESTONE  
MASSANGIS JAUNE CLAIR™ - FRENCH LIMESTONE

ROCHERONS DORÉ™ - FRENCH LIMESTONE  
ROCHERONS DORÉ CLAIR™ - FRENCH LIMESTONE

LENS™ - FRENCH LIMESTONE

50+ quarries  
20+ plants

## Quarried in North America

Locally sourced, quarried,  
transformed, and distributed

## Quarry & Plant Owner

## Greater Availability & Shorter Lead Time

## Sustainable

## Quality Control

Complete control  
of the process

## Blends With Nature

## Durable

Great value over time

## Resists Freeze- Thaw Cycles

## Virtually Maintenance Free

## Design Flexibility

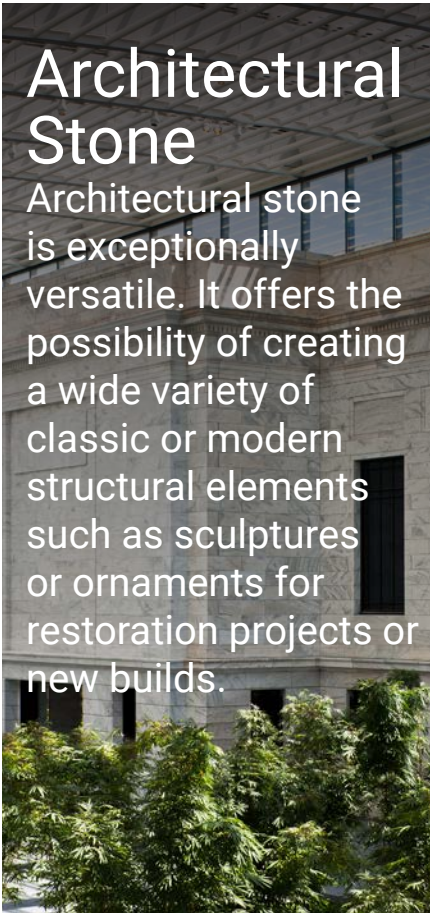
## Balance Between Aesthetic & Performance

## Adaptable to Any Project



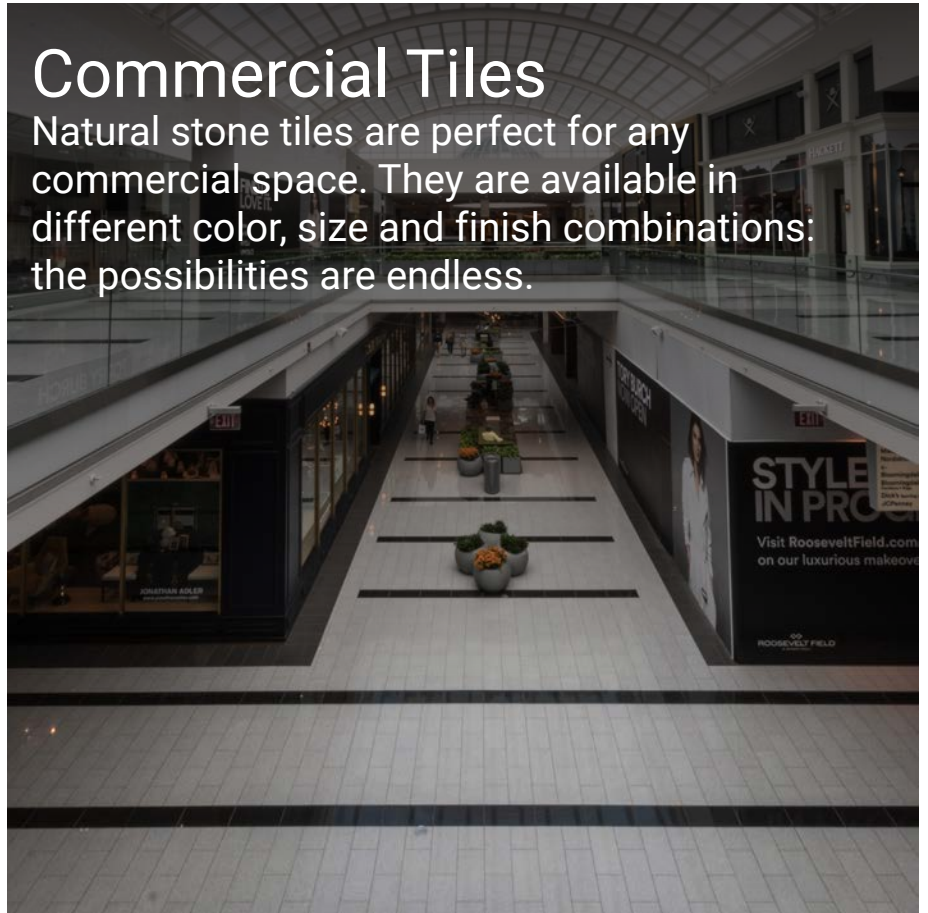
## Architectural Stone

Architectural stone is exceptionally versatile. It offers the possibility of creating a wide variety of classic or modern structural elements such as sculptures or ornaments for restoration projects or new builds.



## Commercial Tiles

Natural stone tiles are perfect for any commercial space. They are available in different color, size and finish combinations: the possibilities are endless.



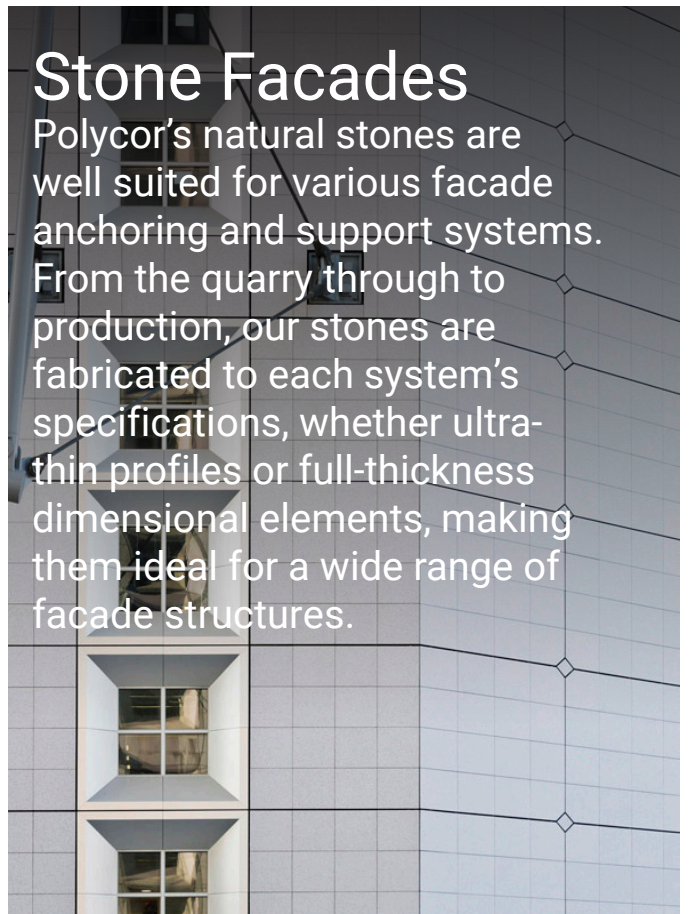
## Commercial Cut-To-Size

We have the expertise to make any vision a reality, from a simple wall to a bench, from outstanding architectural projects to water fountains; you name it, we can make it happen.



## Stone Facades

Polycor's natural stones are well suited for various facade anchoring and support systems. From the quarry through to production, our stones are fabricated to each system's specifications, whether ultra-thin profiles or full-thickness dimensional elements, making them ideal for a wide range of facade structures.







Place des Festivals, Montréal, QC  
Architect : Daoust Lestage  
2009





# Black Stones



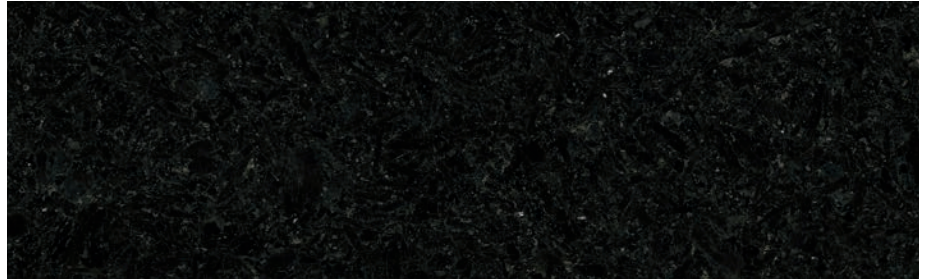
Vertical application, flamed finish



**Kruizenga Art Museum**  
Holland, MI

The new Kruizenga Art Museum at Hope College in Holland, Michigan, is a modernist's dream. Designed by Progressive AE Architecture, it exhibits an unconventional, curved exterior, reminiscent of a painter's palette in shape.

The two-story façade is wrapped in 26 overlapping panels of CAMBRIAN BLACK® granite, creating a curved perimeter. Each panel is 22' tall and is comprised of nine individual granite slabs.



# **CAMBRIAN BLACK®**

## GRANITE

A great Canadian classic, this ebony granite is extracted at our exclusive quarry in Saint-Nazaire, Québec. The various available finishes showcase the stones best features, highlighting the pure-black crystals and allowing them to reflect the light.



Saint-Nazaire, Québec, CAN

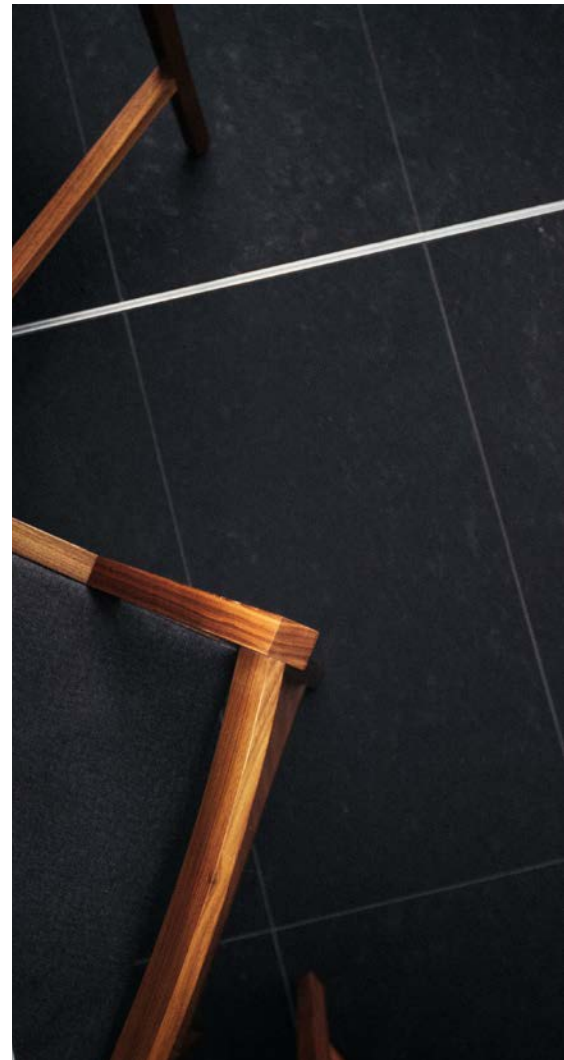


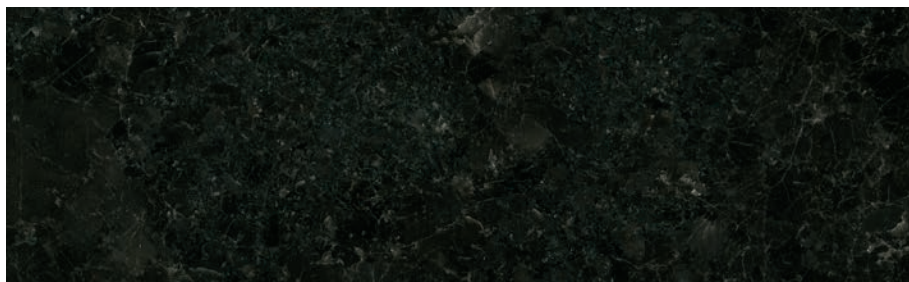


Commercial tiles, honed finish

**Pavillon Pierre-Lassonde**  
Québec, QC

The Pavillon Pierre Lassonde, located on the prestigious Grande Allée in Quebec City, is the gateway to the MNBAQ museum building. Its harmoniously layered architecture features expansive surfaces of SAINT HENRY BLACK™ granite. Designed by OMA (Office for Metropolitan Architecture) the building is seamlessly integrated to the city's existing historical landscape, accentuating the structure's contemporary forms and introducing innovative features for everyday use.





# **SAINT HENRY BLACK™** GRANITE

A masterpiece from Saint-Henri-de-Taillon, Québec, this granite is a patchwork of large, dark, metallic crystals that catch the eye, adding a subtle contemporary look and feel to this classic stone.



Saint-Henri-de-Taillon, Québec, CAN



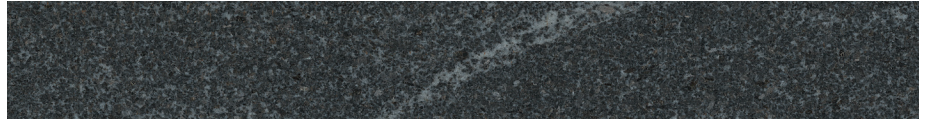
AMERICAN BLACK® granite, Eclad system installation, antique finish  
 AMERICAN BLACK® granite, tiles, antique finish



**Polycor Inc. Headquarters**  
 Québec City, QC



**AMERICAN BLACK®**  
Granite



**AMERICAN MIST™**  
Granite



# AMERICAN BLACK® & AMERICAN MIST™ GRANITES

Quarried in beautiful Elverson, Pennsylvania, this rich black granite with pronounced white veining has a marble-like quality in its vein pattern making it stand out from all other types of granite. Its wavy veining creates movement, drawing the eye and making it the ideal centerpiece for any space.



Elverson, Pennsylvania, USA



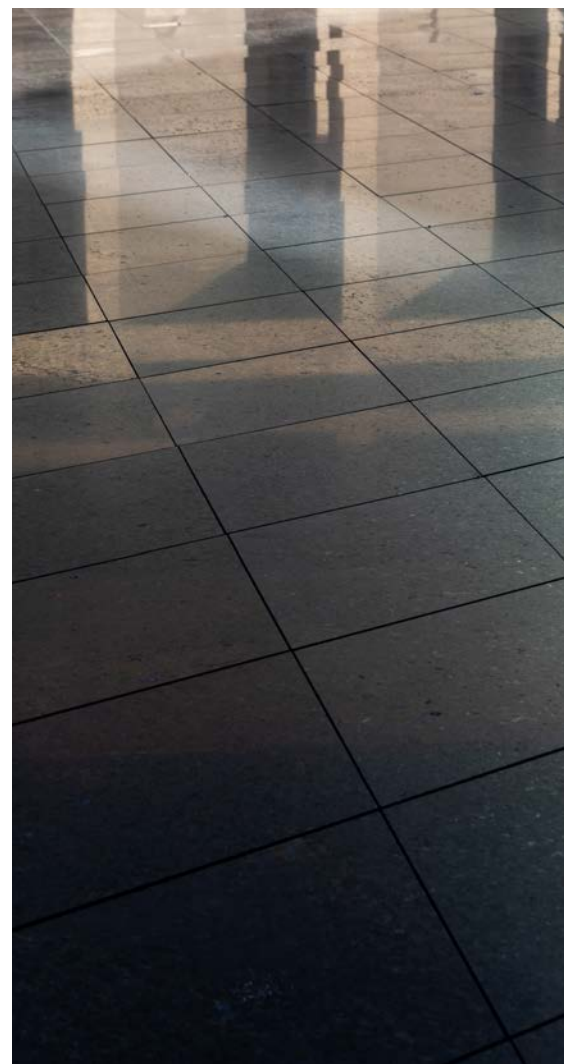
British Normandy Memorial  
Architect: Liam O'Connor  
2021

[illegible]

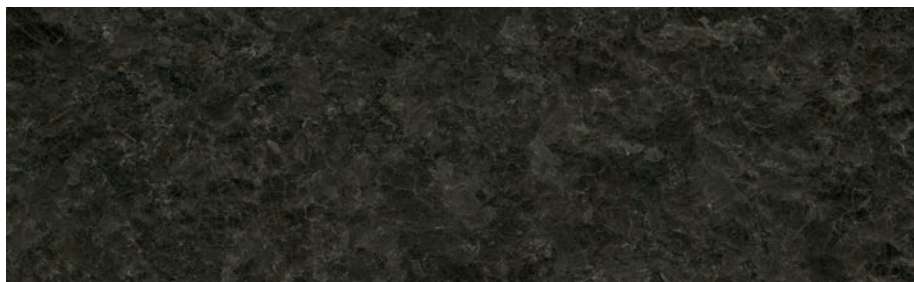




**Christian Science Plaza Reflecting Pool**  
Boston, MA



Pavers, low honed and honed finish



## **KODIAK BROWN™** GRANITE

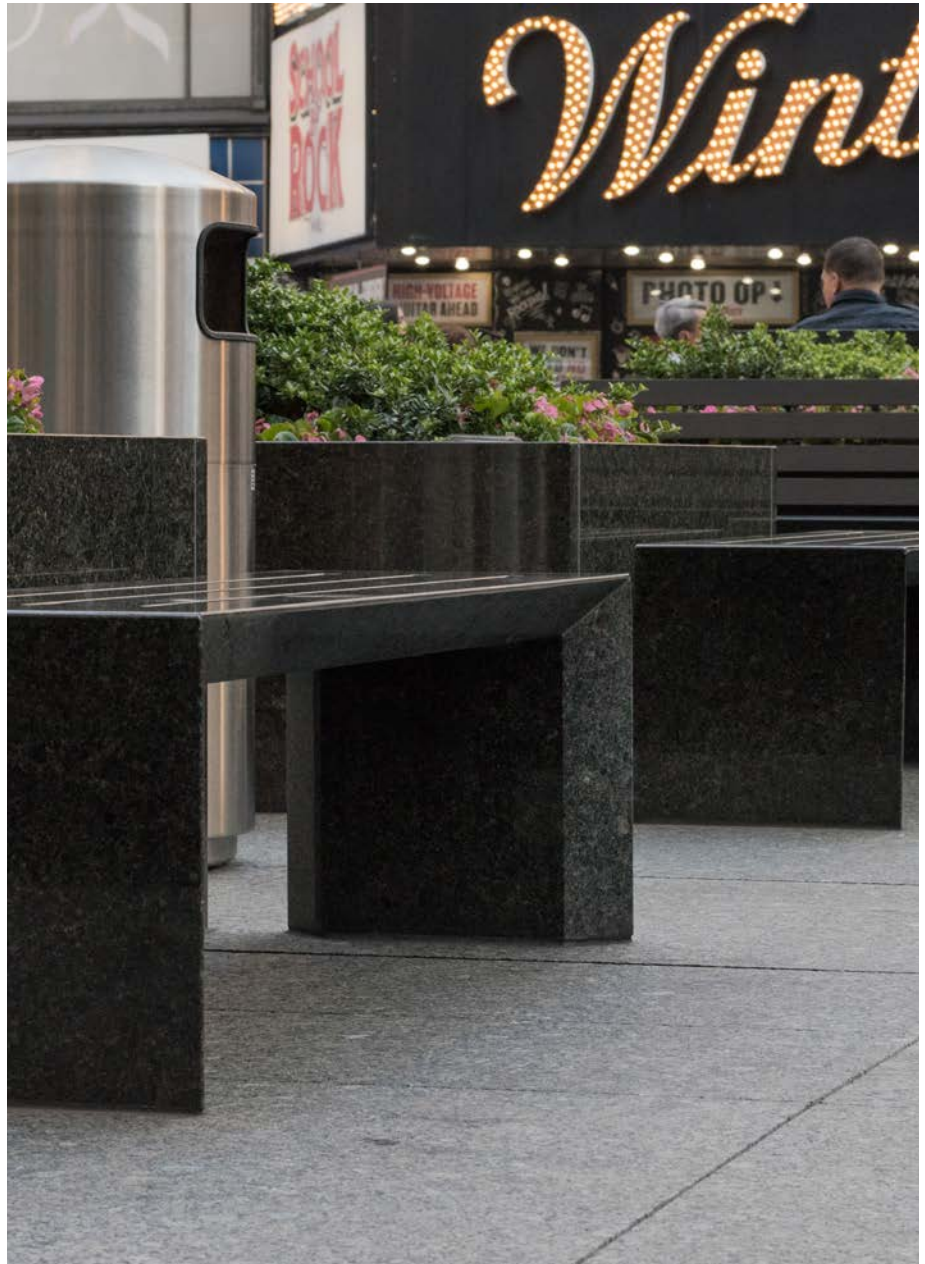
A treasure unearthed in the mountainous region of Chute-des-Passes, Québec, this granite is the ideal product for exterior applications. Its deep brown backdrop punctuated with small pale flakes will lend a soft touch to any style of design.



Chute-des-Passes, Québec, CAN

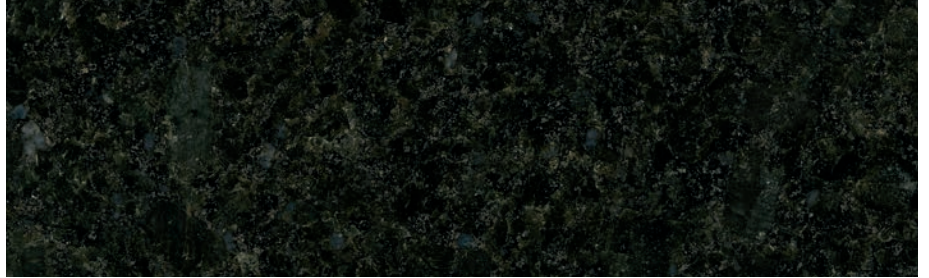


Bench, polished finish • Pavers, flamed finish • Walls, polished finish



Paramount Plaza  
NYC, NY





# LAURENTIAN GREEN™ GRANITE

This pristine dark-green granite, flecked with blue quartz, is extracted in Lac Morin, Québec. Perfectly homogenous, this stone provides a harmonious balance with nature, mirroring the organic hues of its surroundings.



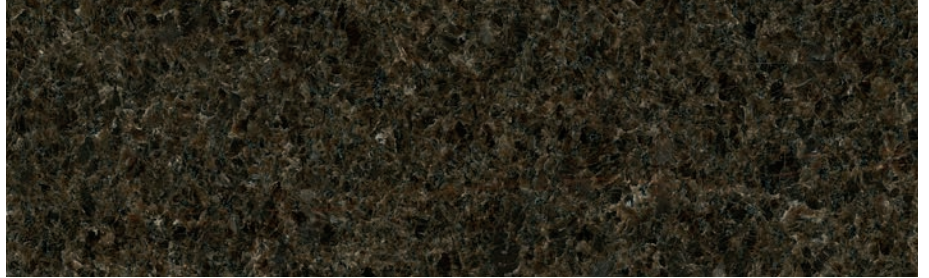
Lac Morin, Québec, CAN



**Place Vauquelin**  
Montréal, QC

Pavers, sandblasted, flamed, and waterjet finishes





## **PICASSO™** GRANITE

With its neutral hues, this beautiful Canadian stone quarried in Magpie, Quebec, is consistent and homogenous in color. It is recognizable for the rich neutral tones of its background color and thin orange surface veins.

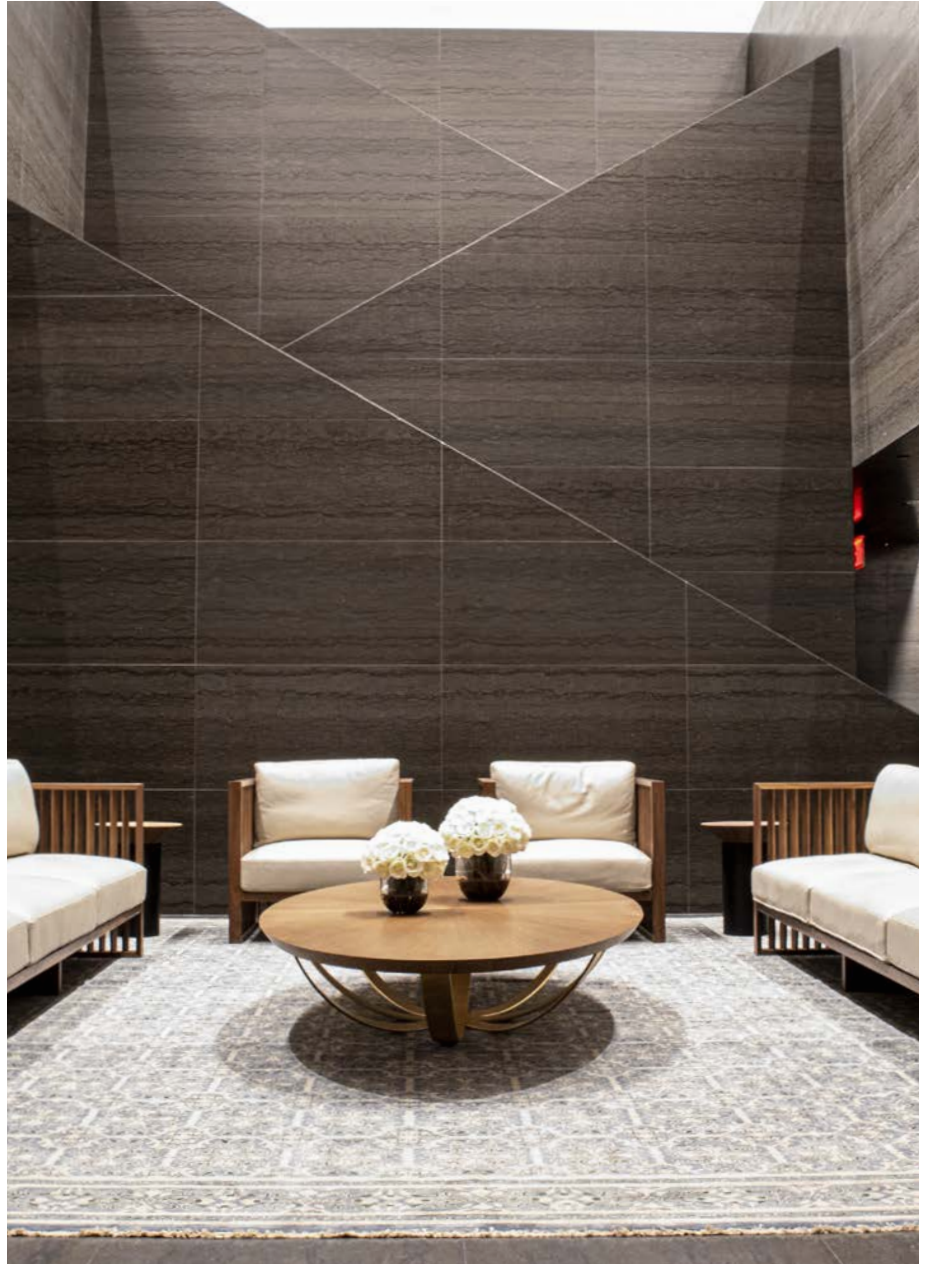


Magpie, Québec, CAN





Interior walls, honed finish, linear cut



**SOM UAE Mission**  
NYC, NY

Architecture firm SOM has designed a limestone-clad building patterned with palm leaves - the international symbol for peace - for the Permanent Mission of the United Arab Emirates to the United Nations in Manhattan. The structure is designed to harmonize with New York's architectural past, the limestone in question being the same Indiana limestone used in the construction of Rockefeller Center and the Empire State Building. The building's double-height entry hall is finished with a palette of natural materials intended to evoke serenity, such as Northern Canadian limestone and serves as a dramatic yet inviting courtyard.

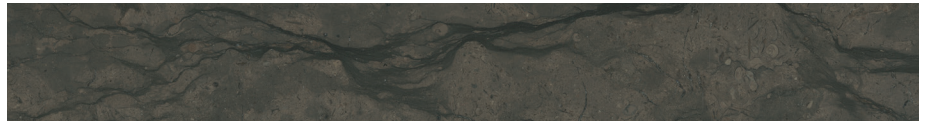
Appeared in



**SAINT PIERRE™ FLEURI** limestone



**SAINT PIERRE™ LINEAR** limestone



# SAINT PIERRE™ LIMESTONES

This rich chocolate-brown limestone originates from Havre-Saint-Pierre, Québec. Recommended for indoor applications due to its subtle hues, it is bound to add a touch of warmth to any space. Depending on the way it is cut, the slabs either exhibit dark veining or an undulation of both light and dark tones.



Havre-Saint-Pierre, Québec, CAN



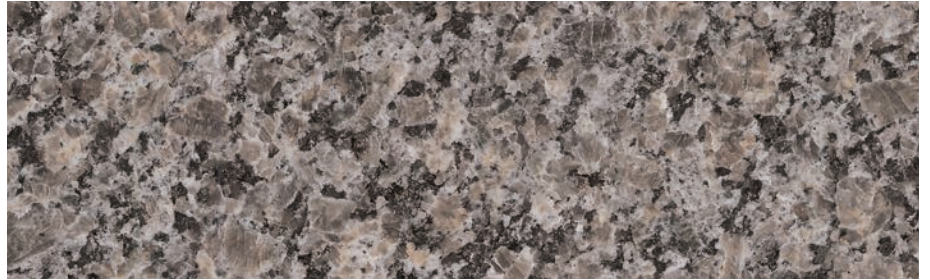


**Princeton University**  
Princeton, NJ

Founded in 1746 as the College of New Jersey, Princeton University was originally intended to educate and train Presbyterian ministers. It changed its name to Princeton University in 1896 and is the fourth oldest university in the United States. The main campus consists of more than 200 buildings which, until the 1960s, were constructed in the Collegiate Gothic style for which the university is known today.

Interior and exterior pavers, flamed finish / Interior walls, flamed finish





# CALEDONIA™ GRANITE

This durable granite from Rivière-à-Pierre, Québec, is a Canadian emblem. Known for its color consistency defined by multiple tones of deep beige with a spattering of dark flecks, this neutral stone is an excellent choice for multi-step projects.



Rivière-à-Pierre, Québec, CAN





INDIANA LESTONE - STANDARD BUFF™, vertical application, honed finish



# **Rockefeller Center** NYC, NY

A towering symbol of optimism in the dark days of the 1930s, Manhattan's Rockefeller Center is a tribute to the vision of its founder, John D. Rockefeller. The construction of the complex was conceived as an urban renewal project to help revitalize Midtown Manhattan.

While most people do not think to look up from the sidewalk when walking around the city, any stone enthusiast will show you that the natural materials used in the construction and cladding of a building tell a fascinating story. Rockefeller Center's façade contains many specimens of 300-million-year-old fossils such as sea moss, snails, and crinoids.

**INDIANA LIMESTONE -  
STANDARD GRAY™**



**INDIANA LIMESTONE -  
RUSTIC GRAY™**



**INDIANA LIMESTONE -  
STANDARD SILVER BUFF™**



**INDIANA LIMESTONE -  
RUSTIC BUFF™**



**INDIANA LIMESTONE -  
STANDARD BUFF™**



**INDIANA LIMESTONE -  
FULL COLOR BLEND™**



# INDIANA LIMESTONES

This renowned limestone from Bloomington, Indiana, is mostly used for outdoor applications and produces outstanding results every time. It is the facade of countless landmarks across North America and can also be used as cladding for exteriors. Indiana Limestone's unique color blend ranges from medium gray to warm beige, adding a pleasant glow to any space.



Bloomington, Indiana, USA





Pavers, honed finish, linear cut

### Metropolitan Square Washington, DC

Metropolitan Square, located in the heart of downtown Washington, covers almost a whole city block, and overlooks prime attractions like The White House, the U.S. Treasury Department, and the National Mall. The building was recently reimagined, breathing fresh life into this timeless Washington landmark. The most dramatic and impactful change can be seen in the atrium, where elegant SAINT CLAIR™ marble is paired with wood features and connects the various amenities across two stories.



**SAINT CLAIR™ FLEURI** marble



**SAINT CLAIR™ LINEAR** marble



## **SAINT CLAIR™** MARBLES

This monochrome American marble from Marble City, Oklahoma has a wavelike pattern that varies from slab to slab. Determined by the way the stone is cut, the slabs will reveal soft variations of gray and beige with tiny dark veins in a Linear cut or a vaporous, cloud-like pattern in a Fleuri cut.

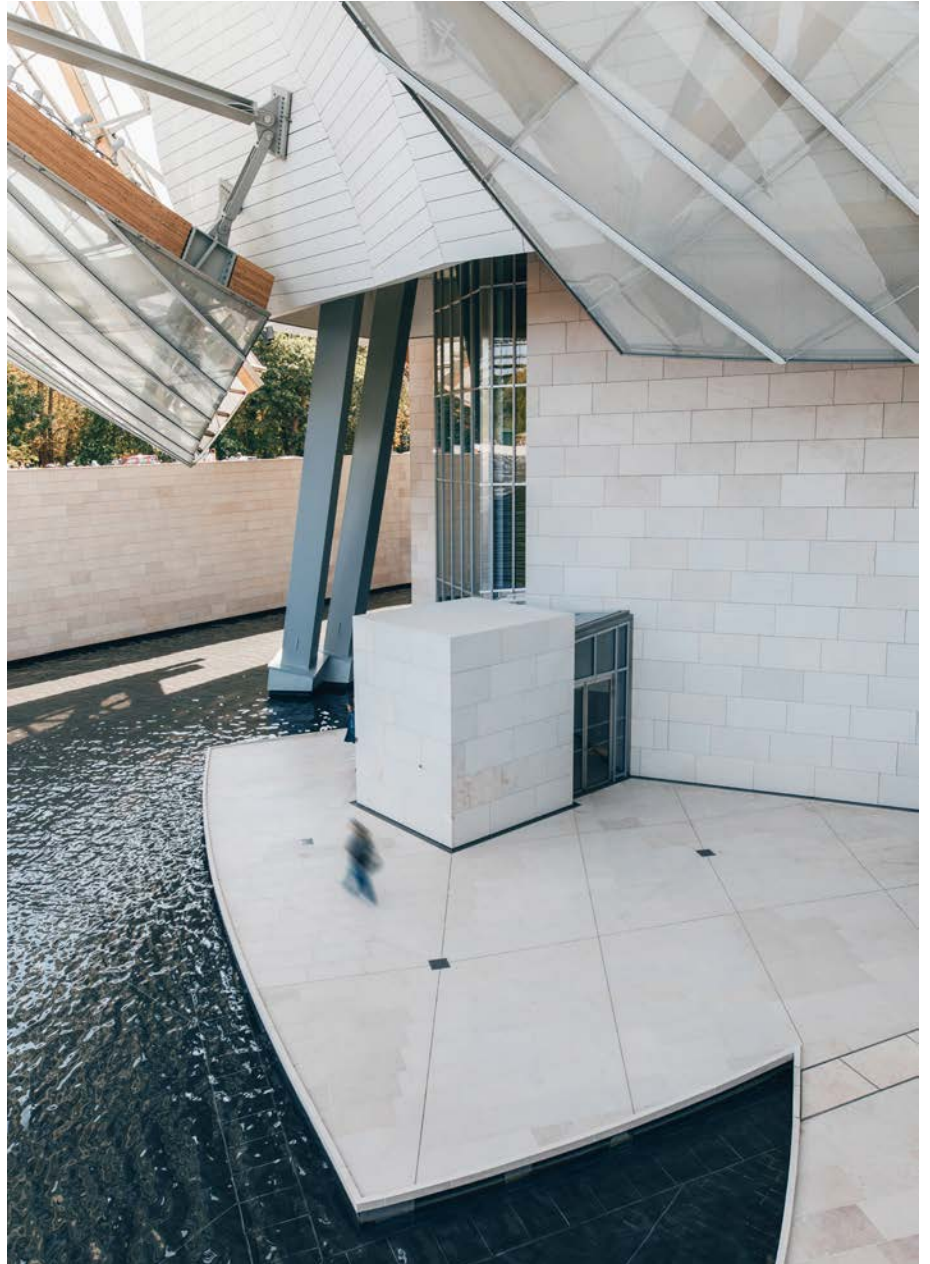


Marble City, Oklahoma, USA





ROCHERONS DORÉ™ - FRENCH LIMESTONE, steps, pavers, and walls, flamed finish



**Fondation Louis Vuitton**  
Paris, France

**ROCHERONS DORÉ™ -  
FRENCH LIMESTONE**



**ROCHERONS DORÉ CLAIR™ -  
FRENCH LIMESTONE**



## FRENCH LIMESTONES

Quarried in the world-renowned Bourgogne region of France, these dense, fine-grained limestones have a compact structure giving them an almost marble-like appearance. They can be found in a range of earth tones ranging from light beige to warm beige-grey with occasional blush tones in the background, creating a unique visual texture.



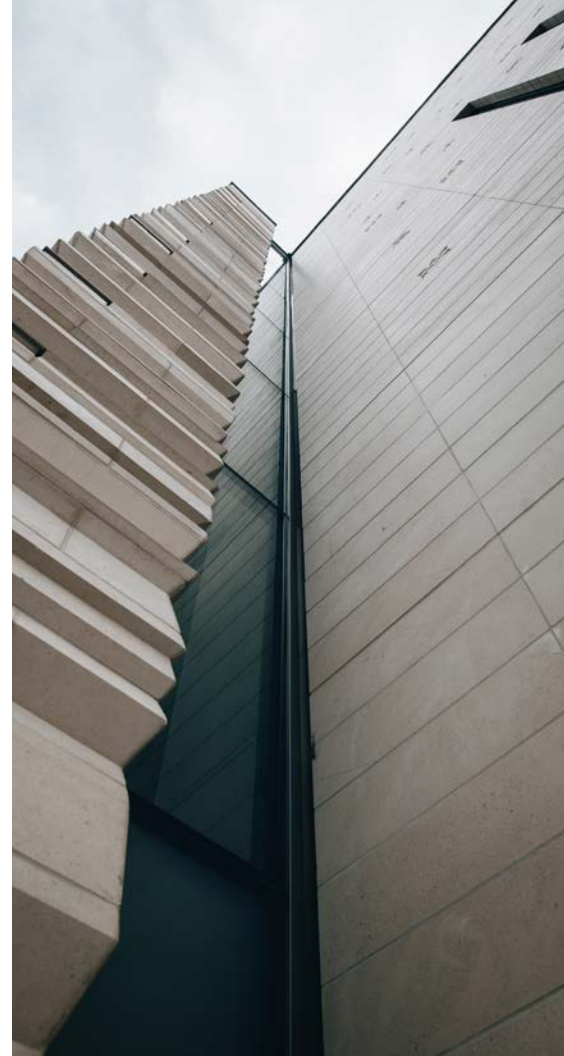
Villers-la-Faye, Burgundy, FR





**Centre Spirituel et Culturel Orthodoxe**  
Paris, France

Throughout the entire project, the new Centre Spirituel et Culturel Orthodoxe Russe was built in compliance with sustainable practices, from design to completion. Sustainability is an integral part of every aspect of the project, from how it blends into the surrounding neighborhood to the versatility of the spaces and amenities, etc. The project was awarded the HQE Aménagement certification and complies with the City of Paris' Climate and Biodiversity Plans.



Vertical applications:  
MASSANGIS CLAIR NUCANCÉ™ - FRENCH LIMESTONE, honed finish  
ROCHERONS DORÉ CLAIR™ - FRENCH LIMESTONE, honed finish  
COMBLANCHIEN CLAIR™ - FRENCH LIMESTONE, honed finish

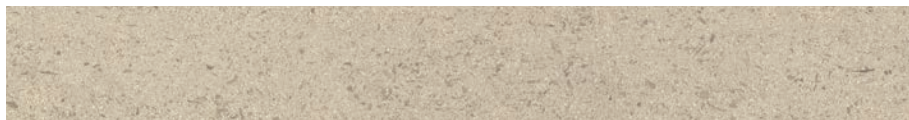
**MASSANGIS JAUNE CLAIR™ -  
FRENCH LIMESTONE**



**MASSANGIS CLAIR NUANCÉ™ -  
FRENCH LIMESTONE**



**VALANGES™ -  
FRENCH LIMESTONE**



**CHARMOT™ -  
FRENCH LIMESTONE**



## FRENCH LIMESTONES

Unearthed at our prestigious Massangis quarry located in the Burgundy province of France, these classic French limestones are equally suitable for both modern and traditional designs. Finely blended with well-balanced pale-yellow and creamy backgrounds, they feature a uniform grain structure with occasional shell inclusions.

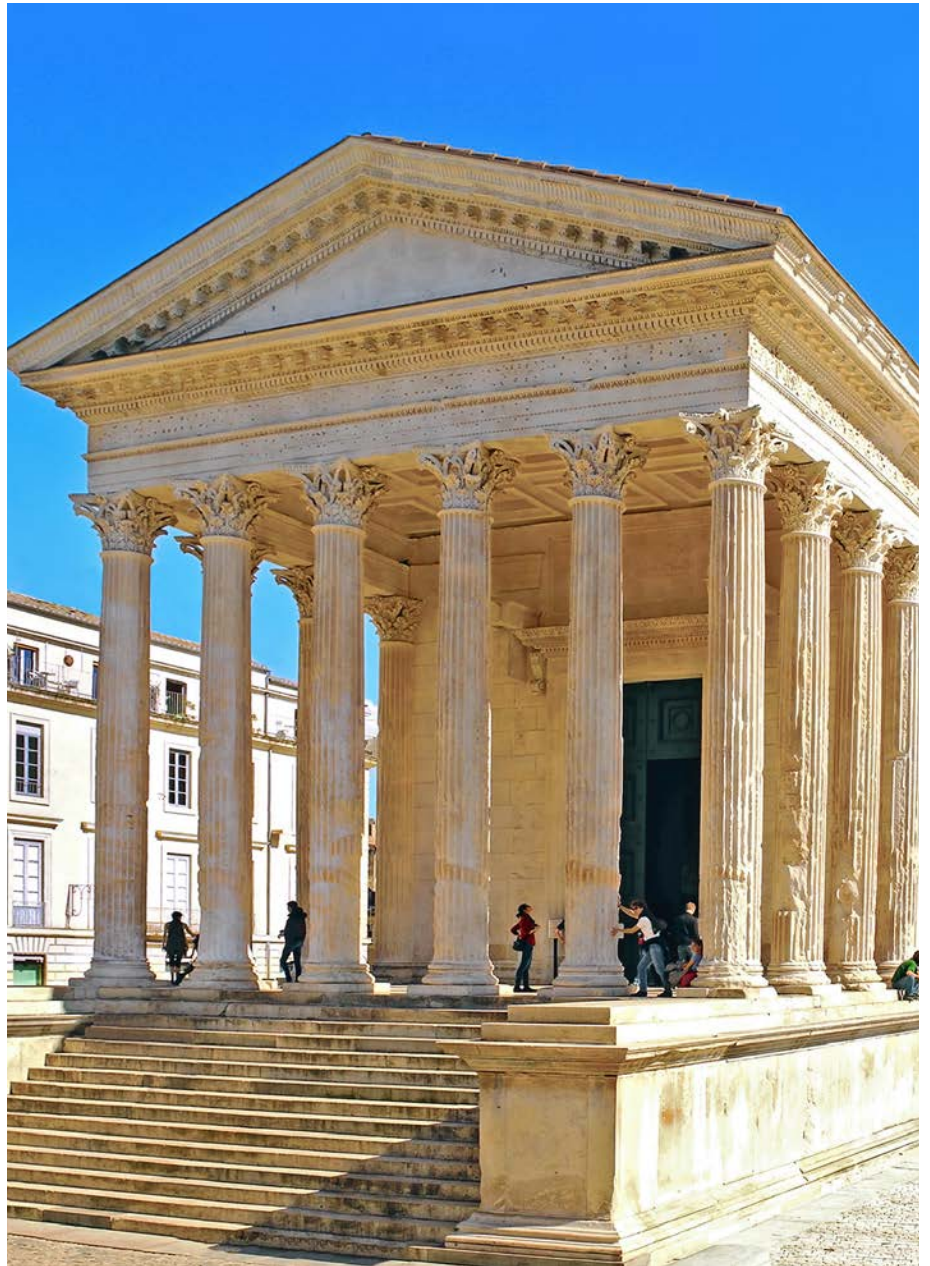


Massangis, Burgundy, FR.





**Maison Carrée**  
Nîmes, France





## **LENS™** FRENCH LIMESTONE

This pristine, creamy white limestone from our Moulézan quarry in Languedoc-Roussillon, France, possesses excellent purity and a fine, compact grain structure. The neutral, ivory-toned background exhibits occasional crystalline slivers adding more depth to the surface—a great option where a monochromatic aesthetic is required.



Moulézan, Languedoc-Roussillon, FR







# Gray Stones





Bench, TITANIUM PEARL™, honed finish  
 Pavers, CAMBRIAN BLACK® and TITANIUM PEARL™ flamed finish

50<sup>th</sup> Street Vent  
 NYC, NY





# **TITANIUM PEARL™** GRANITE

Quarried exclusively at Polycor's site in Rivière-à-Pierre, Québec, the consistency of this tight-grained granite's primary color is extremely stable. Its blue-gray hues and concrete-like aspect make it a popular choice for all types of applications.



Rivière-à-Pierre, Québec, CAN

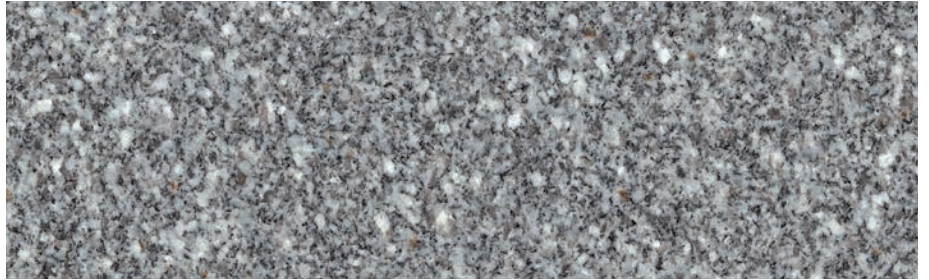




**SFU Burnaby Campus Plaza**  
Burnaby, BC

Built in 1965, the Simon Fraser University Campus is among the most significant pieces of Canadian architecture. The Plaza serves a double function: as an open-air public space and as a roof sheltering education spaces beneath. The upgrades to the outdoor central spine, a processional route of great significance to the campus, have greatly improved the user experience through the aesthetic renewal of the campus outdoor public space.





# **BARRE GRAY®** GRANITE

Recognized around the world as the finest quality gray granite available, **BARRE GRAY®** granite, quarried in Barre, Vermont, is the ultimate long-lasting choice in any finish. Its unique proportions of quartz and feldspar make it unusually durable, moisture-resistant, and thermally stable.



Barre, Vermont, USA

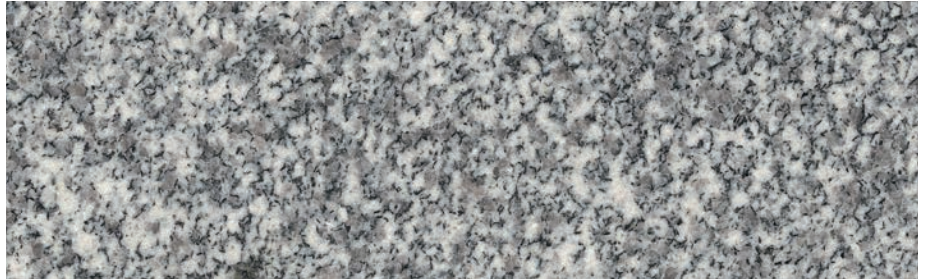




**Sunlife Building**  
Montréal, QC



Vertical application, flamed finish



# **STANSTEAD GREY®**

## GRANITE

Quarried in Stanstead, Québec, this light to medium grey granite has a mid-size coarse grain structure. Its salt and pepper specks are evenly distributed, making it highly consistent in color—an ideal choice for exterior applications.



Stanstead, Québec, CAN





Pavers, thermal finish



**World War II Memorial**  
Washington, DC



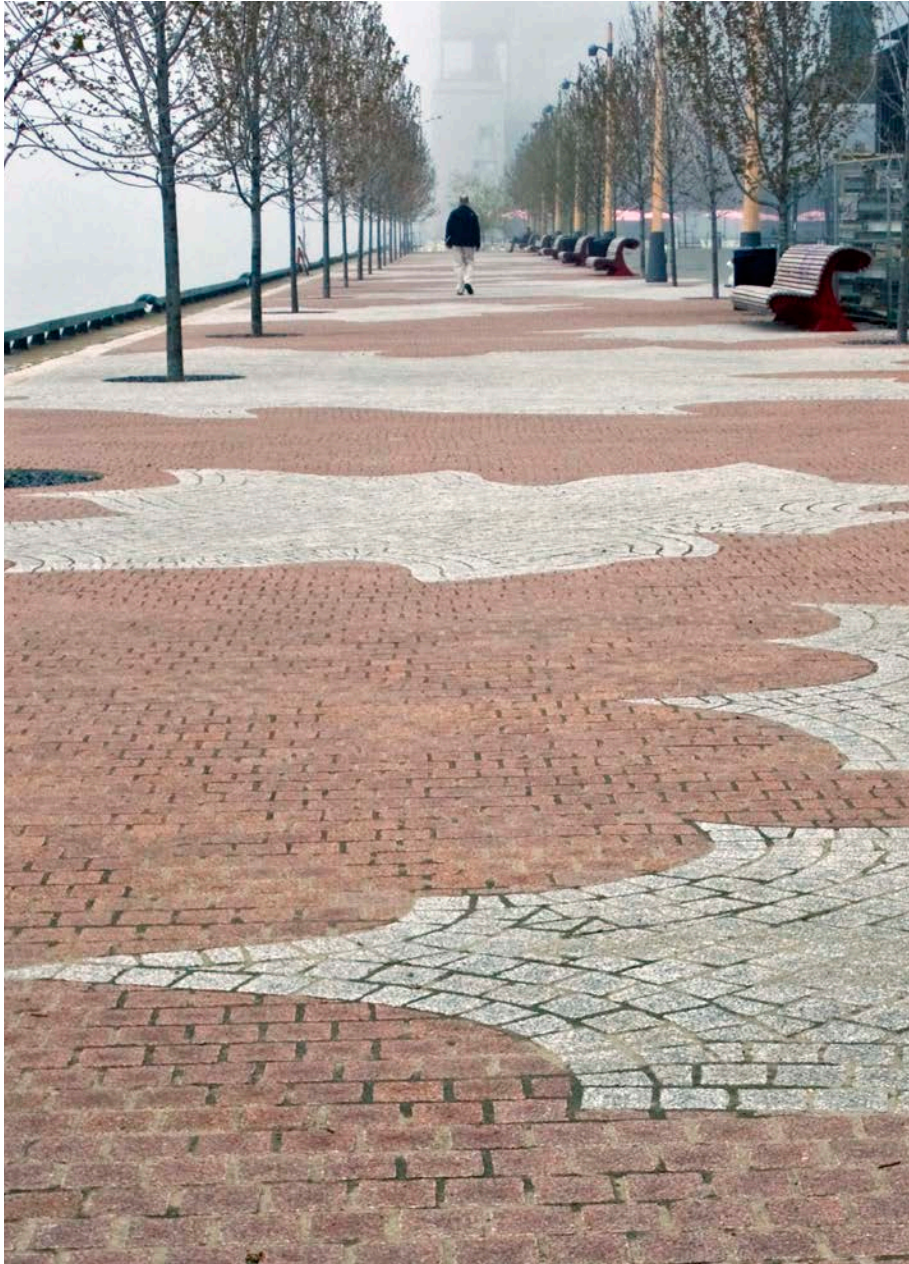
# GREENE COUNTY GRANITE®

This evenly structured, granular granite contains medium-coarse grains and features a white background with pale taupe and light-green tones scattered throughout. Quarried in Greene County, North Carolina, its fine grey and black grains are clustered between larger patches of feldspar and quartz crystal.



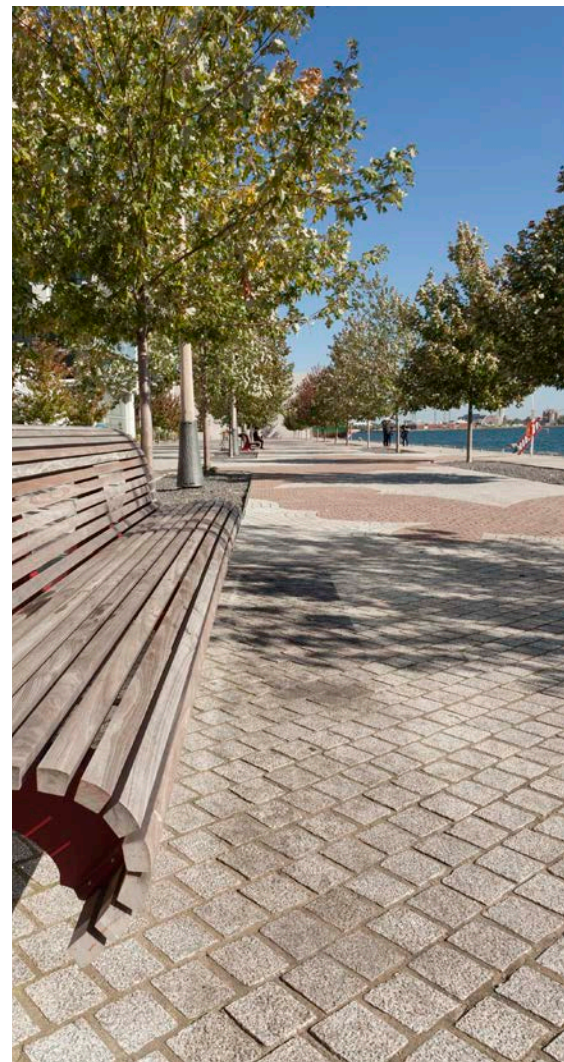
Greene County, Georgia, USA

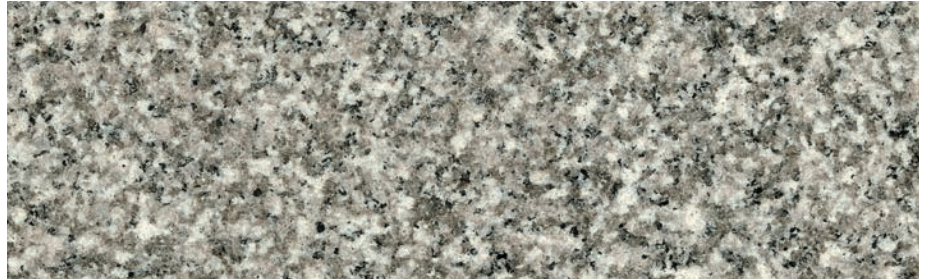




Cobblestones, waterjet finish

**Toronto Waterfront**  
Toronto, ON





# **SAINT SEBASTIEN™**

## GRANITE

Another Canadian classic from Saint-Sébastien, Québec, this granite is a heritage material, having been used in the construction of many iconic buildings in the region. Its warm gray and subtle beige color is different from any other architectural granite on the market and makes it easy to pair with other stones.



Saint-Sébastien-de-Frontenac, Québec, CAN





Grande Arche de la Défense  
Eiffage Construction  
2018

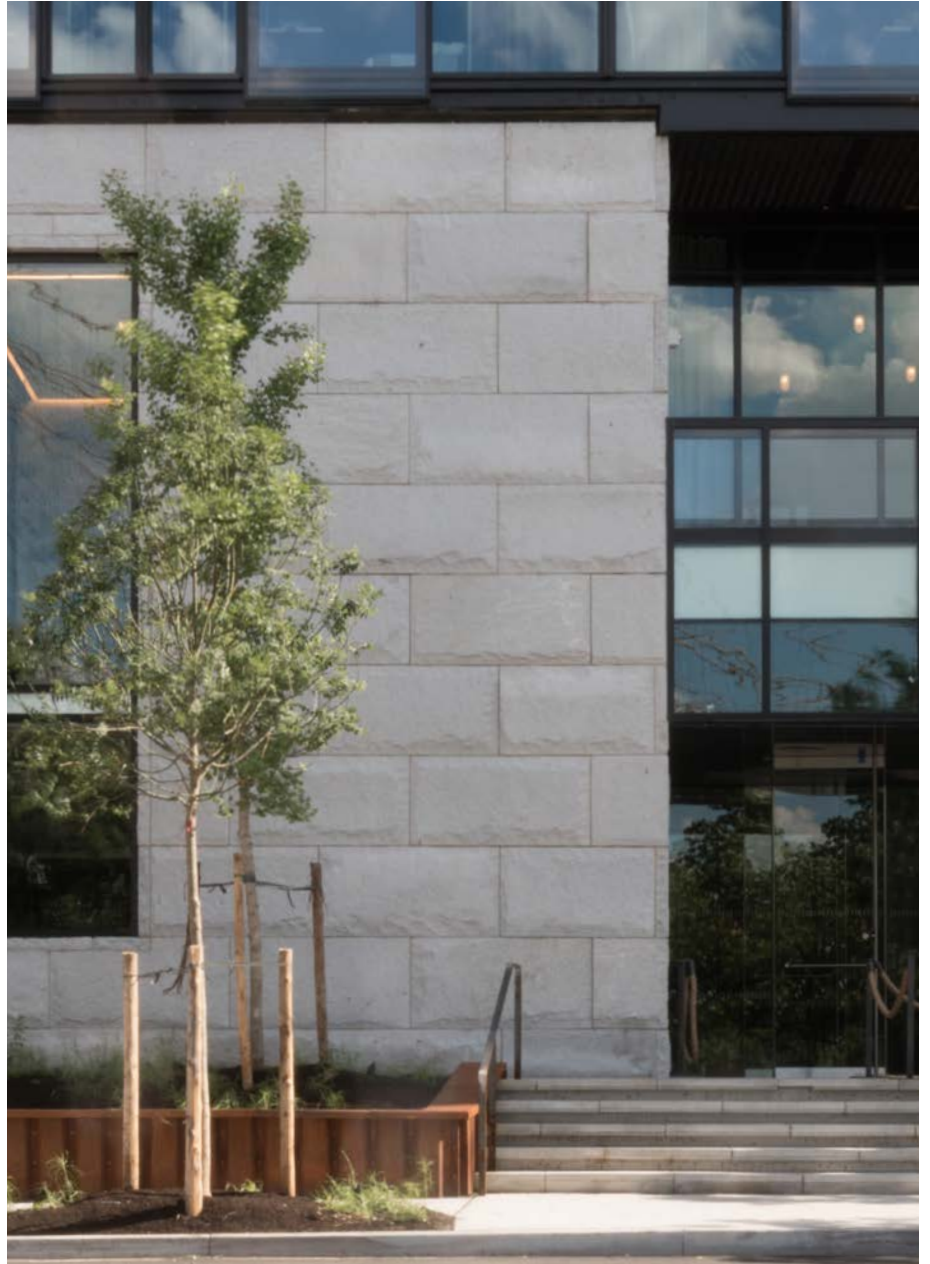


# White Stones

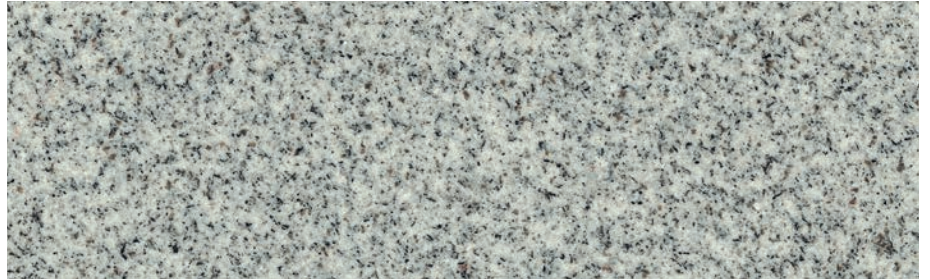




Vertical application, rock pitched finish



**Pierhouse at Brooklyn Bridge Park**  
Brooklyn, NY



## **JAY WHITE™** GRANITE

Extracted at Polycor's site in Jay, Maine, this bright, homogeneous granite is easy to craft and can even become ultra-white in a thermal finish. It is often used in architectural projects such as monuments and curbs in the United States due to its remarkable structural properties and excellent durability.

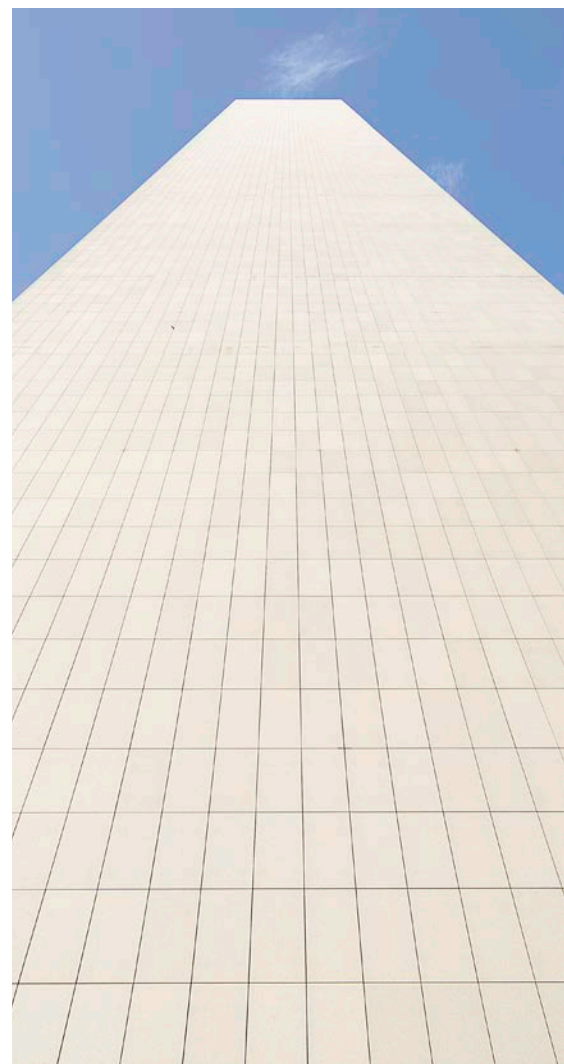


Jay, Vermont, USA

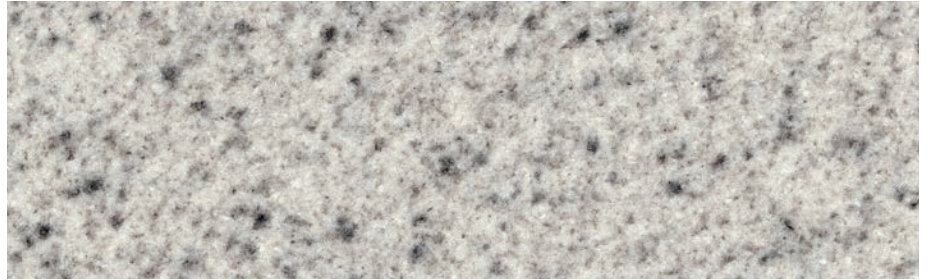




**ADNOC Headquarters**  
Abu Dhabi, UAE



Vertical application, flamed finish



# BETHEL WHITE<sup>®</sup>

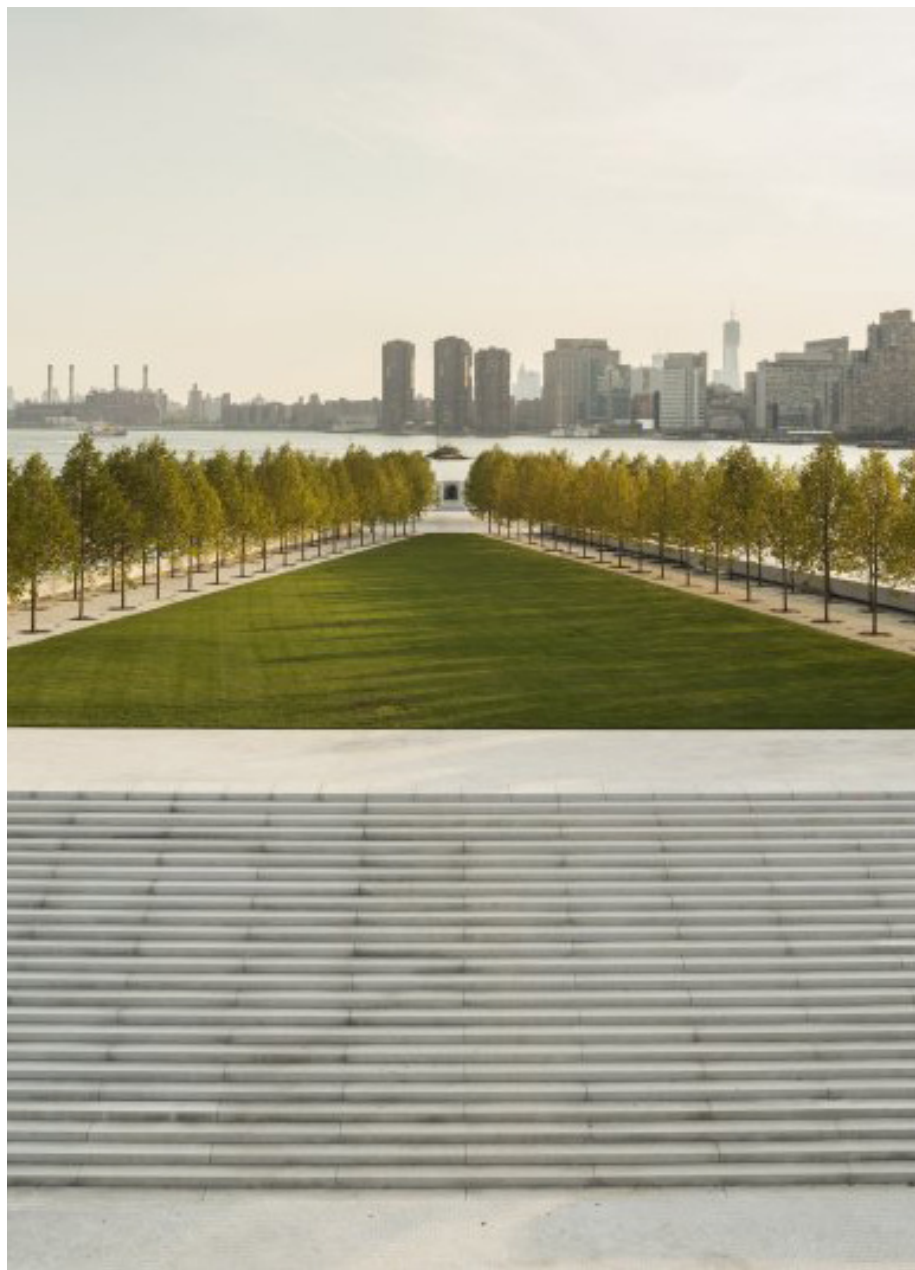
## GRANITE

This flawless white granite quarried in Bethel, Vermont, is one of the most prized in the world. Its pure white base is sprinkled with tiny black flakes for an effortlessly classic look, easily matched with a variety of styles and colors.



Bethel, Vermont, USA





**Franklin D. Roosevelt Four Freedoms  
Park & Memorial**  
Roosevelt Island, NY



# WHITE MOUNT AIRY GRANITE®

Extracted at the world's largest open-air quarry located in Mount Airy, North Carolina, this iconic signature granite has been used on multiple projects worldwide. Known for its unmistakable, predominantly white color, it also includes a mixture of light gray, medium-grained specks.



Mount Airy, North Carolina, USA

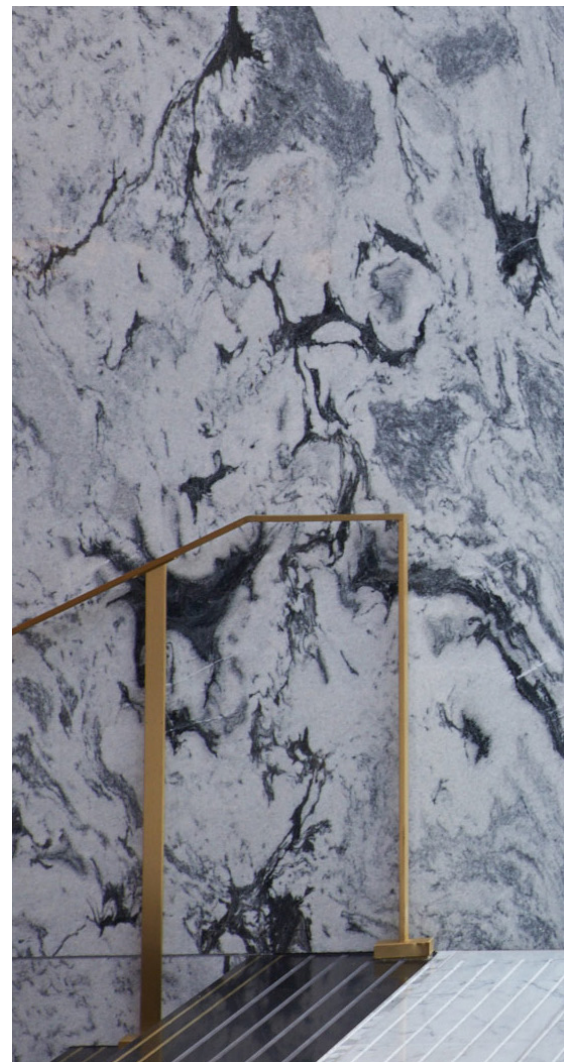




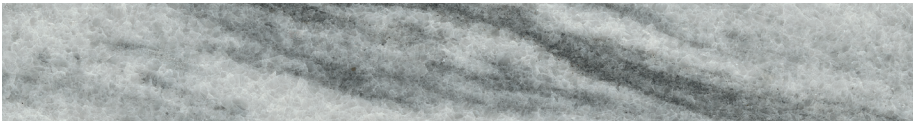
Thin slab wall cladding, polished finish

**The Ritz-Carlton Hotel**  
Chicago, IL

Built in 1975, the Ritz-Carlton Chicago has recently undergone a complete transformation. To establish a strong core narrative, the architects, BAMO, were inspired by the GEORGIA MARBLE™ - WHITE CHEROKEE and PEARL GREY marbles used to clad the facade of the building to maintain the connection between the building's interior and exterior. The hotel's contemporary renovation epitomizes the city's heritage of architecture, forward-thinking design, and industrial innovation.



GEORGIA MARBLE™ - PEARL GREY



GEORGIA MARBLE™ - WHITE CHEROKEE



# GEORGIA MARBLES

The consistent grain structure of this North American marble from Tate, Georgia contributes to its strength and resistance. The trilogy of white, gray, and black veins creates a dramatic statement that immediately draws the eye making it the star attraction of any space.



Tate, Georgia, USA

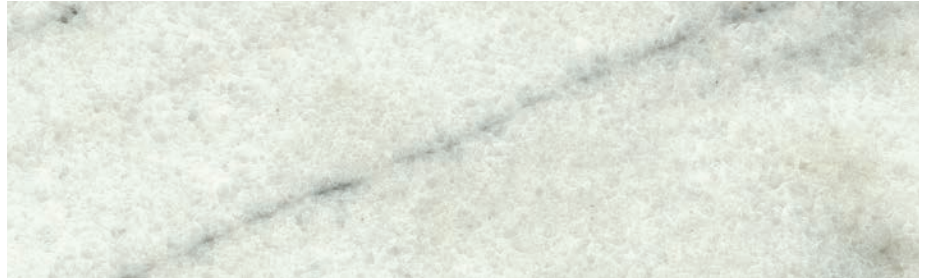




Vertical application, sandblasted finish



**Minnesota State Capitol**  
St Paul, MN



## GEORGIA MARBLE™ - WHITE GEORGIA

Quarried at our site in Marble Hill, Georgia, this marble has more subdued tones and less pronounced veining than its sister stones quarried a few miles away. This classic marble has built countless historical American landmarks, its subtle waves adding interesting movement to each piece.



Marble Hill, Georgia, USA





Stone is the past  
and the future of  
building materials





Nîmes Coliseum, Nîmes, France  
LENS™ - FRENCH LIMESTONE





Polycor Inc. products are natural. Subtle variations in color and texture do occur and are part of what makes natural stone unique and attractive. We cannot guarantee an exact match to any of the photographic images contained in this brochure. Polycor Inc.'s continuing attention to product improvement requires that product specifications, technical information, and availability are subject to change without notice.

© 2023 Polycor Inc. All Rights Reserved.







Scan this QR Code to find  
a stone expert in your region.

# polycor.com

## Contact Us



+1 418.692.4695

Our natural stones are quarried and  
processed in the U.S., Canada, and France

