

# SILLS

## PRODUCT DATA SHEET



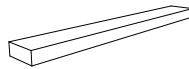
Scan me for  
more info.



Sills add a subtle accent to any residential or commercial window project. Available in limestone, granite, or marble with a split-face or rock-face edge.

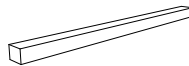
### FULL SILLS

Depth	Height
6" X 48"	2 1/4"



### THIN SILLS

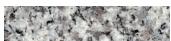
Depth	Height
3" X 48"	2 1/4"



### STONES



**INDIANA LIMESTONE - FULL COLOR BLEND™**  
Rock-face



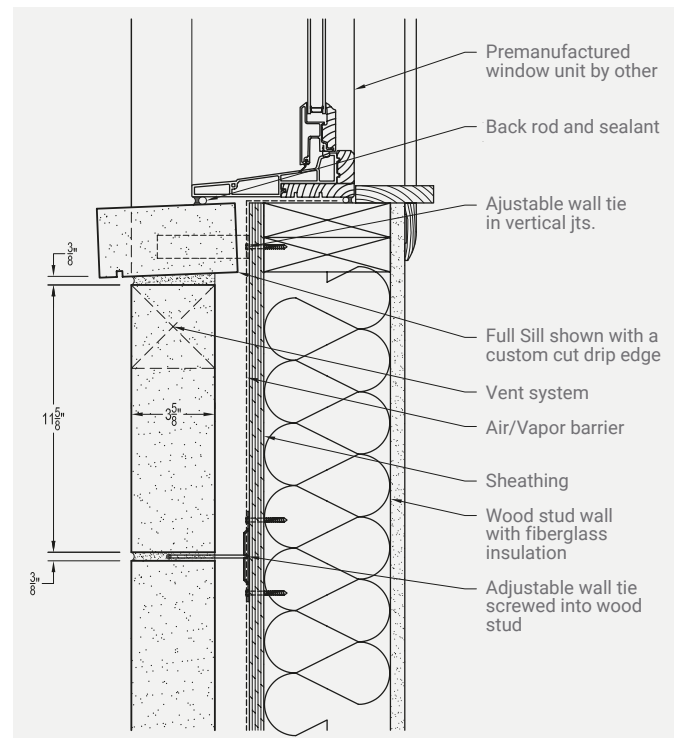
**EASTERN GRAY™** granite  
Split-face



**GEORGIA MARBLE™ - PEARL GREY**  
Split-face

Drip edge not included

### DIAGRAM OF SILL INSTALLATION



SILLS

PACKAGING INFORMATION

THIN VENEER							
Products	Size	Depth	Quantity per crate	Units per crate	Weight per crate (Lbs)		
					Limestone	Granite	Marble
Full Sill - Split-face	2 1/4" X 48"	6"	144 ln.ft	36	1,940	2,261	2,355
Thin Sill - Split-face	2 1/4" X 48"	3"	240 ln.ft	60	1,520	1,889	1,968