



NATURAL STONE BRIDGES THE PAST AND THE FUTURE



POLYCOR

RESTORING A QUEEN

Narragansett, Rhode Island was a popular summer resort town in 1887 when this Queen Anne Victorian home was built. With stained-glass windows, ornate bargeboards, and a charming assortment of shingle styles, it was a turn-of-the-century dream home. Flash forward 130+ years and the once stately Victorian still stands, but the exterior weathered, the interior structurally deficient, and the home sitting on its corner lot, vacant and abandoned.

The choices made when preserving and rehabbing an historic home helps keep history alive. And that's why Polycor materials, with their own storied history, were the perfect solution for this extensive project.



WOODBURY GRAY™ granite
Thermal

INDIANA LESTONE - FULL COLOR BLEND™
ROCKFORD ESTATE BLEND® Thin Veneer
Tumbled



Over the years, the Queen Anne Victorian went from a dream home to a diamond in the rough. Rehabbing a home like this was complicated, detailed and exacting work—built on maintaining as much historic architectural value and charm as possible—and, in this instance, had the additional challenge of meeting historic district commission guidelines.

Together with a team of skilled craftsmen, including full design build firm Sweenor Builders and mason Mark McCullough, the house has been restored, renovated and reimagined.



INDIANA LIMESTONE - FULL COLOR BLEND™
ROCKFORD ESTATE BLEND® Thin Veneer
 Tumbled



“

The nice thing is that the stone is going to **weather perfectly** and not stand out as new construction. It's going to hold its color, but weather in a manner that looks like it's been there for a **long time.**

”

JOHN MACHUNIS

Vice-President, Hardspaces & Masonry Sales

In the front of the home, the distinctive shingle and trim patterns take center stage, while the **WOODBURY GRAY™** granite driveway cobblestones, walkway pavers, and stair treads give the space an historic look and feel while providing a neutral base for the vibrant Victorian colors of the exterior.



WOODBURY GRAY™ granite
Thermal

INDIANA LIMESTONE - FULL COLOR BLEND™
ROCKFORD ESTATE BLEND® Thin Veneer
Tumbled



“

The **WOODBURY GRAY™** granite in the front yard **really blended** with the two blue tones that we used on the house, which were inspired by its proximity to the ocean.

”

Kristen Martone
Interior Designer at Sweenor Builders

HISTORY RIGHT AT HOME

Curb appeal starts with natural stone
hardscaping products and accessories. Straight
from Polycor's iconic North American quarries
to your backyard.

GET THE BROCHURE →



Indiana Limestone - Empire Quarry
Bloomington, IN, USA

MULTI-USE OUTDOOR LIVING

A multi-use outdoor living environment with history.

The completely reconcepted backyard area features **INDIANA Limestone - FULL COLOR BLEND™**. While the stone is quarried out of Southern Indiana, the same stone is prominently featured in one of the most famous buildings in Rhode Island, the Breakers Mansion in Newport shore. The Breakers was built around the same time as the Seaside Victorian Cottage, making the limestone a historically appropriate choice for the renovation project.



INDIANA Limestone - FULL COLOR BLEND™
Low Honed

PATTERN PAVERS

Sold in sets and available in three different sizes, pattern pavers provide contractors with many more design options. Simplify your design with pre-configured layouts.

Dimensions	Thickness
12" X 24"	1 1/2"
24" X 24"	1 1/2"
24" X 36"	1 1/2"

Only available in **INDIANA LIMESTONE - FULL COLOR BLEND™**

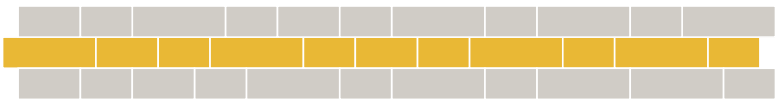


PATTERNS

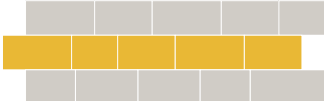
Sold in sets and available in three different sizes, pattern pavers provide contractors with many more design options. Simplify your design with pre-configured layouts that will look terrific in any space.

Our three most popular linear and modular patterns can be found below. To see other available patterns, please contact your regional sales representative or visit our website at hardscapes-masonry.polycor.com.

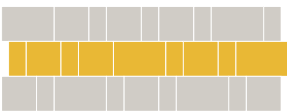
LINEAR PATTERNS



Cambridge

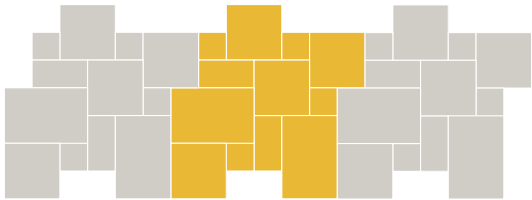


Concord

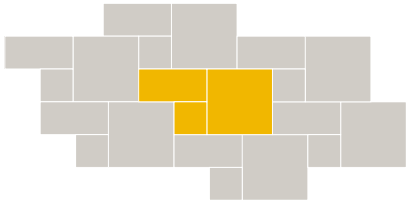


Vineyard

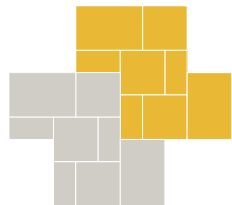
MODULAR PATTERNS



Savannah



Charleston



Richmond



“

Rhode Island is a very small community and it's **very proud** of its history. And to be able to talk about The Breakers and the state house and how that applies to this particular job, that was kind of exciting.

”

JOHN MACHUNIS

Vice-President, Hardspaces & Masonry Sales

CENTURIES OF HISTORIC STONE

THE BREAKERS

Local turn-of-the-century architecture draws tourists along the scenic Cliff Walk where stunning homes are perched atop seaside promenades overlooking the Atlantic. The panoramic vistas, ocean air, roaring surf and stone outcrops attracted the nation's elite in the 19th century.

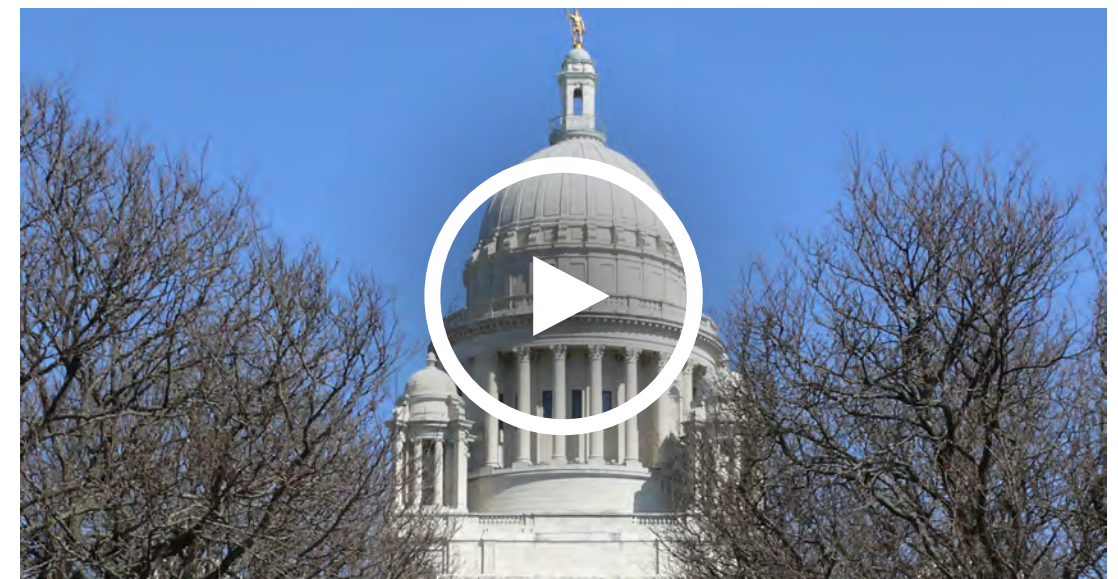
The Breakers mansion was designed as a summer cottage for railroad magnate Cornelius Vanderbilt II. Completed in 1897, it is the grandest home in all of Newport. Built in an Italian Renaissance style, it is also constructed entirely out of the same Indiana Limestone, a favorite of Mr. Vanderbilt's for all his architecture, including Grand Central Station in New York City.



RHODE ISLAND STATE HOUSE

In the capital of “Little Rhody”, Providence is a bustling urban center just a short drive from the coast. Known for its colorful history at the forefront of the industrial revolution, there were originally five separate capitals.

When Providence was finally settled as the seat of government in 1854 Polycor's historic Georgia Marble quarry in Tate, GA supplied all the stone for the construction of the Rhode Island State House which boasts the world's 4th largest self supporting marble dome (trailing just behind St. Peter's Basilica in Rome and the Taj Mahal). Coincidentally, it's the same stone that is still quarried today, which is used at the Seaside Victorian, and that brings together the history with the town.



THIN SLICE, TO GO

A prefabricated fireplace and brick pizza oven combination by Round Grove Products is the show piece of the new outdoor kitchen. The one-ton unit was built in sections in Ohio and trucked to the Rhode Island site where it was clad in **INDIANA LIMESTONE - FULL COLOR BLEND™, ROCKFORD ESTATE BLEND®** split and tumbled thin veneer. The thin stone veneer allowed mason Mark McCullough to make a lot of progress in a short amount of time for an ultimately fast installation.

GET THE INSTALLATION GUIDE →



INDIANA LIMESTONE - FULL COLOR BLEND™
ROCKFORD ESTATE BLEND® Thin Veneer
Tumbled

ROCKFORD ESTATE BLEND®

ROCKFORD ESTATE BLEND® is a lightly tumbled, genuine natural stone veneer. It provides a full range of natural colors and sizes that will accentuate each application's dynamics and architectural style. Available in both thin and full-bed veneer.

THIN-VENEER

Height	Depth	Length
2" - 12"	3/4" - 1 1/4"	8" - 18"

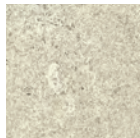
CORNERS

Height	Depth	Length
2" - 12"	3" - 4"	4" - 12"

FULL-BED VENEER

Height	Depth	Length
2" - 12"	3" - 4"	6" - 18"

Stone



INDIANA LIMESTONE - FULL COLOR BLEND™, Tumbled





GEORGIA MARBLE - PEARL GREY™
BERKSHIRE™ veneer

The interior of the first floor was gutted, with steel beams and posts inserted to open up and expand the living area, which features a fireplace clad in **BERKSHIRE™** veneer in **GEORGIA MARBLE - PEARL GREY™**.



GEORGIA MARBLE - PEARL GREY™
Honed



GEORGIA MARBLE - PEARL GREY™
Honed

On the second floor, the luxurious master suite—part of the new addition—includes a large ensuite bathroom where sinks, with a finish reminiscent of the luminosity of seashells, sit at a $\frac{3}{4}$ mount atop a **GEORGIA MARBLE - PEARL GREY™** countertop in the new space.



GEORGIA MARBLE - PEARL GREY™
BERKSHIRE™ Thin Veneer
Split face

“

With a lot of fireplaces, the stone can make it feel much heavier. And this house just demanded something that was **light and airy**, and the **GEORGIA MARBLE - PEARL GREY™** definitely was a great application for that.

”

Kristen Martone
Interior Designer at Sweenor Builders







SEE THE INSTALLATION VIDEO →







STONES IN THE PROJECT



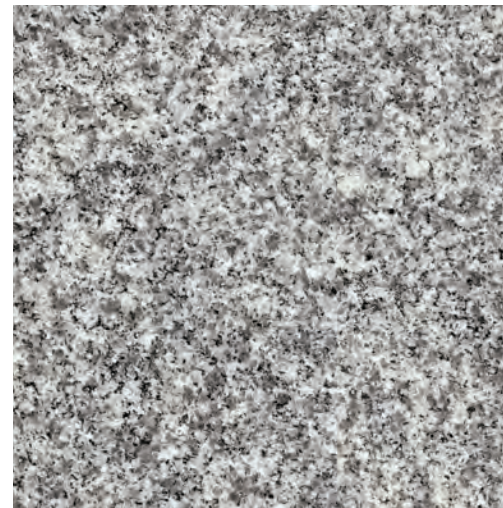
**INDIANA LIMESTONE - FULL
COLOR BLEND™**
Honed

📍 Quarried in Bloomington, IN, USA



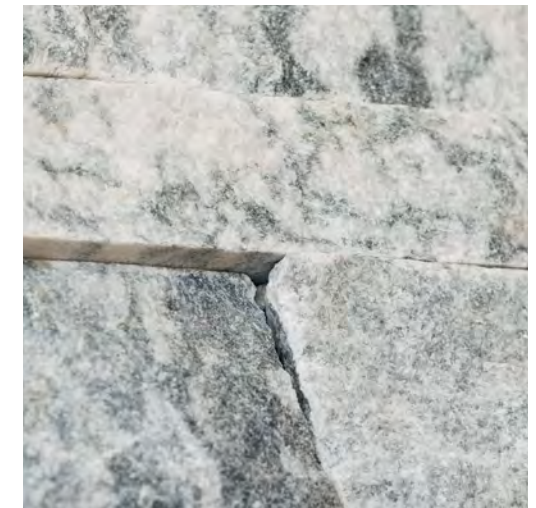
**INDIANA LIMESTONE - FULL
COLOR BLEND™, ROCKFORD
ESTATE BLEND®** veneer

📍 Quarried in Bloomington, IN, USA



WOODBURY GRAY™ granite
Thermal

📍 Quarried in Woodbury, VT, USA



**GEORGIA MARBLE - PEARL
GREY™, BERKSHIRE™** Thin-Veneer
Split face

📍 Quarried in Tate, GA, USA

ADDITIONAL RESOURCES

HOW-TO VIDEOS



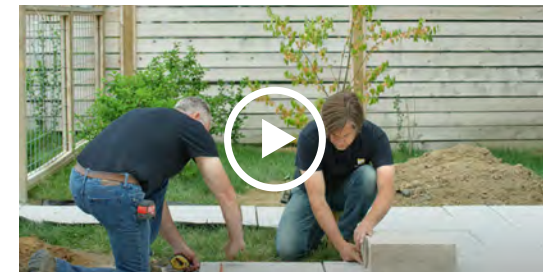
HOW TO INSTALL A GRANITE SLAB
PAVER PATIO IN HALF THE TIME WITH
EZ BASE



HOW TO BUILD A DRY-STACK LOOK
STONE WALL USING POLYCOR
GARDEN WALL PRODUCTS



UPGRADE YOUR OUTDOOR
LIGHTING: HOW TO INSTALL A
GRANITE LAMP POST



HOW TO BUILD A NATURAL
STONE PILLAR ONTO A GARDEN
WALL

PRODUCT SHEETS

SLAB PAVERS



WALL CAPS



BERKSHIRE™ ESTATE VENEERS



INSTALLATION GUIDE

ESTATE VENEERS SERIES



PAVERS INSTALLATION GUIDE





POLYCOR

OUR STONE.
YOUR IDEAS.

PROUD PARTNER



Our natural stones are quarried
and processed in the U.S., France and Canada.

polycor.com

A POLYCOR INC. COMPANY