



BLOCKS & QUARRIES



- 4 OUR STORY
- 6 OUR STOCKING PARTNERS

11 PREMIUM EXPORT QUALITY BLOCKS

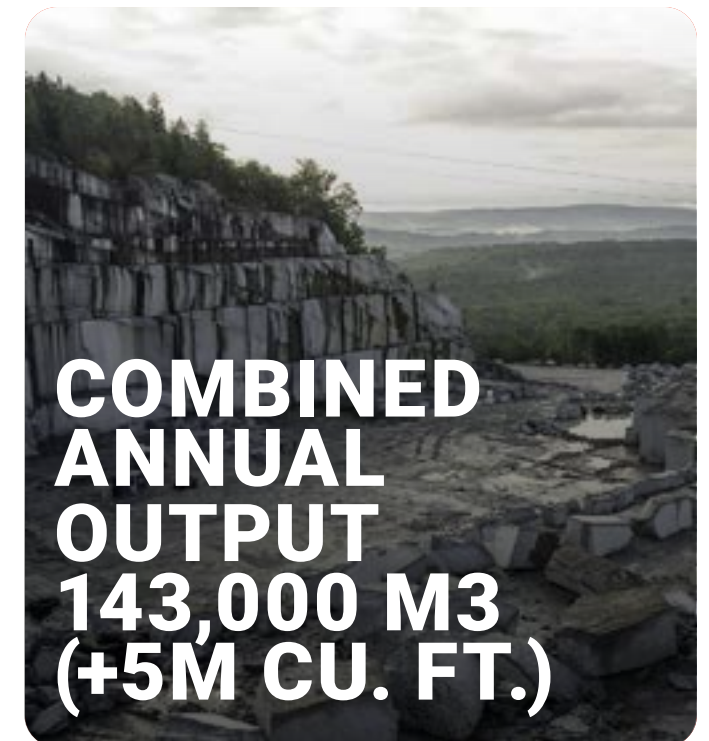
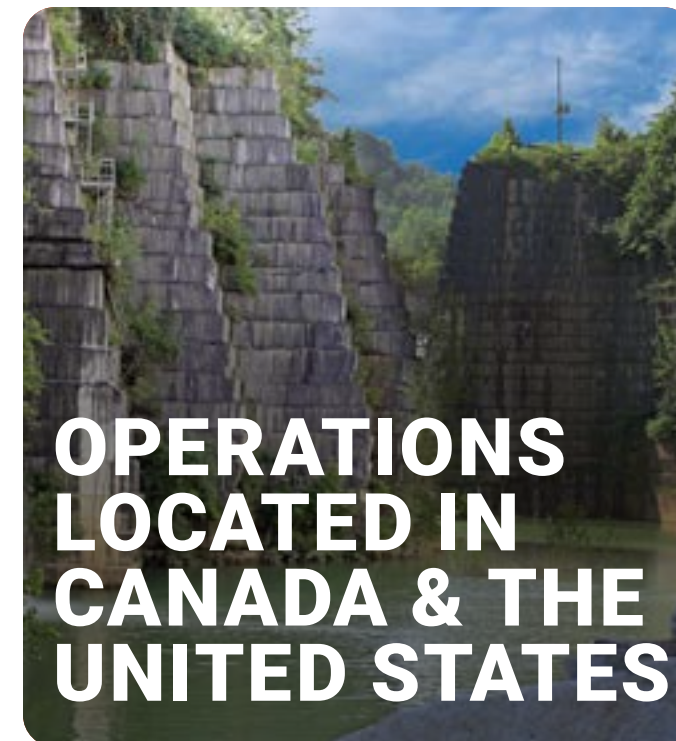
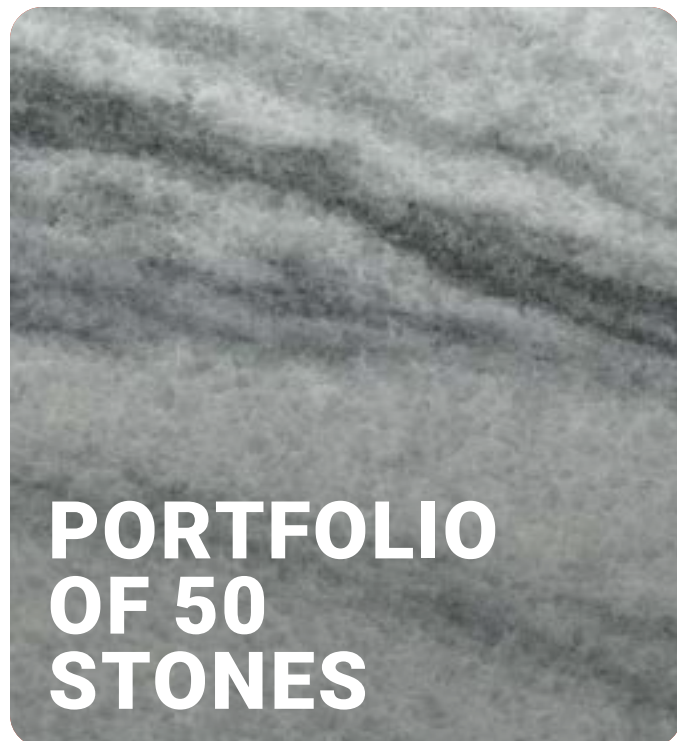
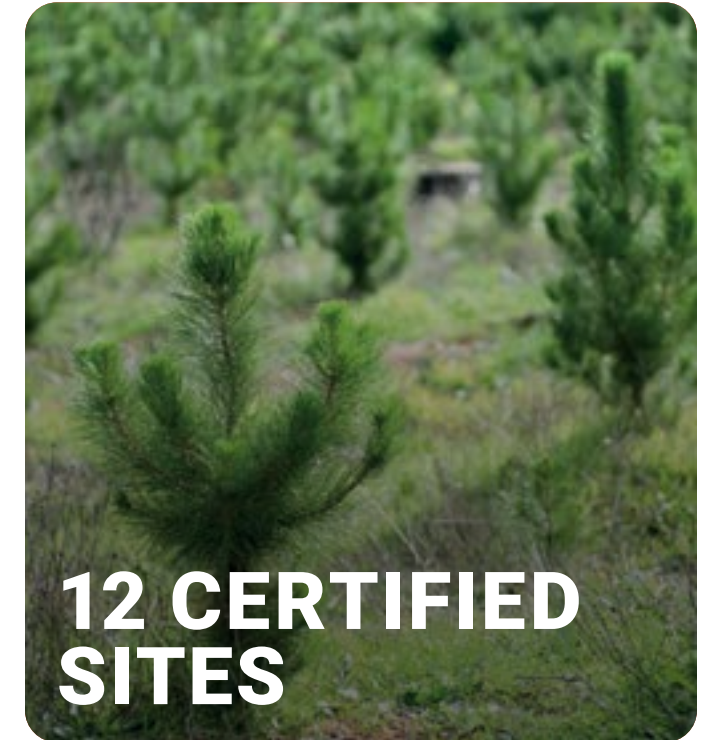
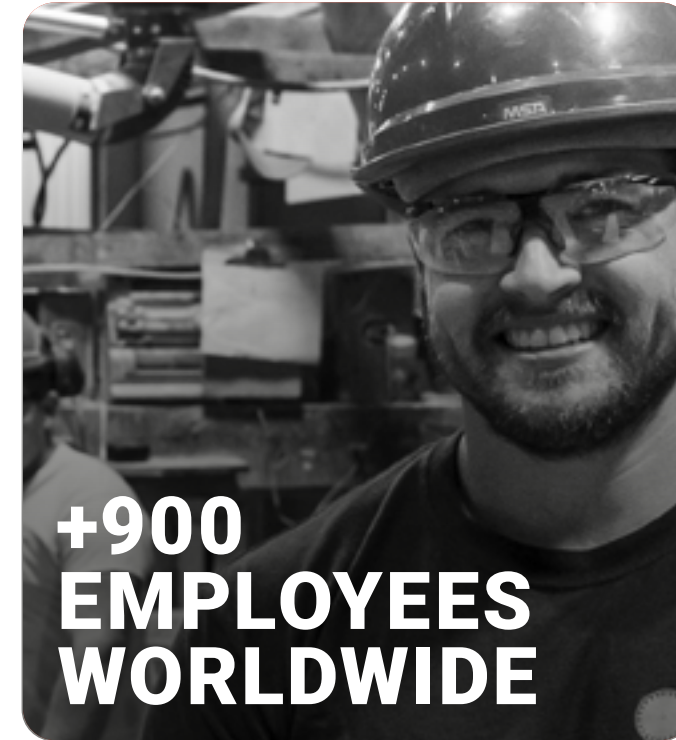
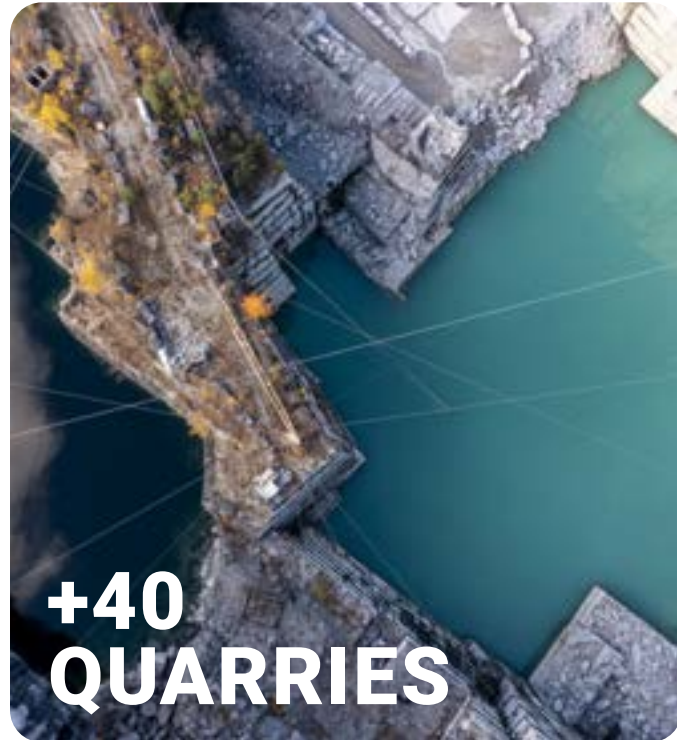
- 12 AMERICAN BLACK™
- 13 BETHEL WHITE™
- 14 CALEDONIA™
- 15 CAMBRIAN BLACK™
- 16 ERAMOSA
- 17 GEORGIA MARBLE™ - PEARL GREY™
- 18 SAINT HENRY BLACK™

20 ALSO AVAILABLE FOR EXPORT

- 20 BARRE GRAY™, GEORGIA MARBLE™ - WHITE CHEROKEE™, INDIANA LIMESTONE - GRAY™, INDIANA LIMESTONE - SILVER BUFF™, LAURENTIAN GREEN™, MAYBERRY MIST™, PICASSO™

21 OUR QUARRIES

OUR STORY



OUR STOCKING *partners*

Bagnara - Verona (European Market)

Address: Via Madonna del Riposo, 34, 39057 Appiano sulla strada del vino BZ, Italy

Contact: Luca D'Agostino

Email: rivoli@bagnara.net

Phone: +39 04 56269094

Website: bagnara.net

Stones:

- **AMERICAN BLACK™** granite
- **BETHEL WHITE™** granite
- **ERAMOSA** limestone

Cereser Marmi - Verona (European Market)

Address: Via dell'Industria, 1, 37010 Rivoli Veronese VR, Italy

Contact: Siro Scala

Email: siro@ceresermarmi.com

Phone: +39 39 38128388

Website: ceresermarmi.com

Stones:

- **CAMBRIAN BLACK™** granite
- **SAINT HENRY BLACK™** granite
- **GEORGIA MARBLE™** - **PEARL GREY™**
- **ERAMOSA** limestone

Polycor Agent - Stefano Braccini

Address: Via Antica Massa, 4A, 54031 Carrara MS, Italy

Contact: Stefano Braccini

Email: braccinistefano93@gmail.com

Phone: +39 335 312655

Stones:

- **ERAMOSA** limestone



OUR STOCKING *partners*

BDM

Showroom Address: 27, Cheongwonsandan7-Gil, Mado-Myeon, Hwaseong-Si, Gyeonggi-Do, 18543, South Korea

Headquarters Address: 3308, 511 Yeongdong-daero, Gangnam-Gu, Seoul, 06164, South Korea

Contact: Minji Choi

Email: minji.choi@baik-doo.com

Phone: +82 2 561 4797

Stones:

- **CAMBRIAN BLACK™** granite
- **GEORGIA MARBLE™** - **PEARL GREY™**

Hong Yi Stone

Address: 47-2 Dingxia Liao, Zhoucuo village, Guanqiao Town, Nanan City, Fujian, 362341, China

Contact: Freezo Hung

Email: 845864753@qq.com

Phone: +86 15905092610

Stones:

- **AMERIAN BLACK™** granite
- **BETHEL WHITE™** granite

Sichuan Jialangte Industrial Co., Ltd

Address: Jialangte, Area 2, Gate 3, Xishi International Stone Exhibition & Sales Center, Nan'an City, Quanzhou City, Fujian Province, China

Contact: Mr. Zheng Zhang

Email: 1243980944@qq.com

Phone: +86 18113149943

Website: obamamarble.com

Stones:

- **ERAMOSA** limestone

Xiomen Orient Wanli Stone

Address: Rm. 311-313, 3rd floor, Hall A, No. 1267 Gangzhong Road, Huili District, Xiamen, P.R. China 361006

Contact: Denny Liu

Email: mqchina@blocks.cn

Phone: +86 137 2087 0410

Website: wanlistone.com

Stones:

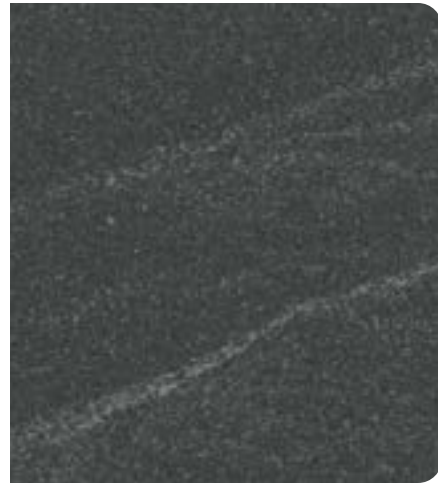
- **CALEDONIA™** granite
- **CAMBRIAN BLACK™** granite





GEORGIA MARBLE™ QUARRY
Tate, GA, USA

PREMIUM EXPORT QUALITY BLOCKS



AMERICAN BLACK™

Granite



 PENNSYLVANIA, USA

Port of origin: Norfolk, VA, USA

Characteristics:

- Very consistent pattern (tighter range)
- Exclusive linear movement
- Darker than our competitors

		IMPERIAL	METRIC
Absorption by weight	ASTM C97	0.023%	0.023%
Density	ASTM C97	192.3 lb/ft ³	3,080.35 kg/m ³
Compressive strength	ASTM C170	43,524 Psi	300.09 MPa
Flexural strength	ASTM C880	3,560 Psi	24.5 MPa
Modulus of rupture	ASTM C99	3,799 Psi	26.19 MPa



BETHEL WHITE™

Granite



 VERMONT, USA

Port of origin: Montréal, QC, CAN

Characteristics:

- Delivers the whitest granite building possible
- No oxidation
- Large extraction capacity

		IMPERIAL	METRIC
Absorption by weight	ASTM C97	0.256%	0.256%
Density	ASTM C97	164.4 lb/ft ³	2,633.44 kg/m ³
Compressive strength	ASTM C170	34,027 Psi	234.61 MPa
Flexural strength	ASTM C880	1,754 Psi	12.1 MPa
Modulus of rupture	ASTM C99	1,937 Psi	13.36 MPa





CALEDONIA™

Granite



 QUÉBEC, CAN

Port of origin: Montréal, QC, CAN

Characteristics:

- Large extraction capacity
- Renowned historical material
- Available in two distinctives colors: Medium | Medium Dark

		IMPERIAL	METRIC
Absorption by weight	ASTM C97	0.12%	0.12%
Density	ASTM C97	169 lb/ft ³	2,710 kg/m ³
Compressive strength	ASTM C170	28,021 Psi	193.2 MPa
Flexural strength	ASTM C880	1,392 Psi	9.6 MPa
Modulus of rupture	ASTM C99	1,711 Psi	11.8 MPa



1000 de la Gauchetière
Montréal, QC, CAN



Columbus Circle
Manhattan, NY, USA



CAMBRIAN BLACK™

Granite



 QUÉBEC, CAN

Port of origin: Montréal, QC, CAN

Characteristics:

- Background color consistency
- Exclusive quarry and material
- One of a kind grain structure

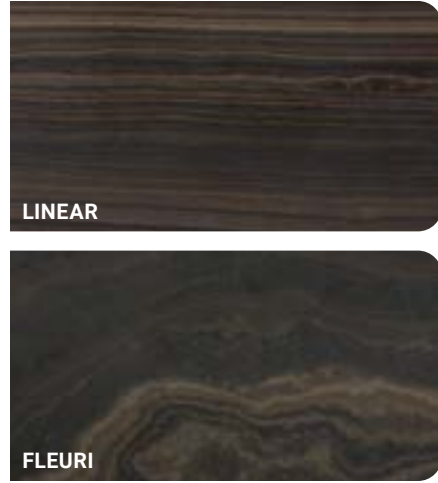
		IMPERIAL	METRIC
Absorption by weight	ASTM C97	0.09%	0.09%
Density	ASTM C97	177.9 lb/ft ³	2,850 kg/m ³
Compressive strength	ASTM C170	21,450 Psi	147.9 MPa
Flexural strength	ASTM C880	1,670 Psi	11.5 MPa
Modulus of rupture	ASTM C99	1,980 Psi	13.7 MPa



Meritz Tower
Seoul, KOR



Kruizenga Art Museum
Holland, MI, USA



ERAMOSA

Limestone



 ONTARIO, CAN

Port of origin: Montréal, QC, CAN

Characteristics:

- Unique stone
- Available in two different patterns: Fleuri | Linear
- Pattern and color consistency

		IMPERIAL	METRIC
Absorption by weight	ASTM C97	0.16%	0.16%
Density	ASTM C97	173 lb/ft ³	2,772 kg/m ³
Compressive strength	ASTM C170	34,178 Psi	235.65 MPa
Flexural strength	ASTM C880	N/A	N/A
Modulus of rupture	ASTM C99	3,859 Psi	26.61 MPa



Grand InterContinental Seoul Parnas
Seoul, KOR



Eramosa Fleuri Slab
Warton, ON, CAN



GEORGIA MARBLE™

PEARL GREY™



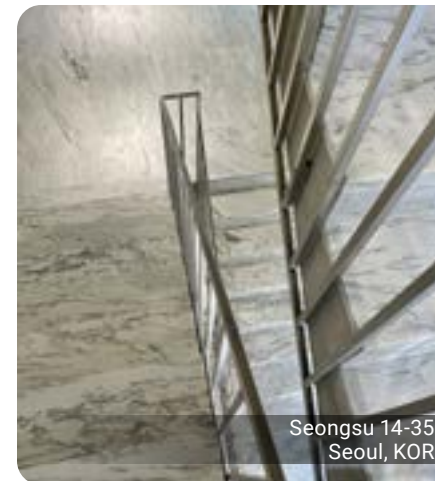
 TATE, USA

Port of origin: Savannah, GA, USA

Characteristics:

- Large extraction capacity
- Technical characteristic close to granite
- Grain structure allows different looks by changing finishes

		IMPERIAL	METRIC
Absorption by weight	ASTM C97	0.09%	0.09%
Density	ASTM C97	169.4 lb/ft ³	2,713.53 kg/m ³
Compressive strength	ASTM C170	9,505 Psi	65.53 MPa
Flexural strength	ASTM C880	1,192 Psi	8.22 MPa
Modulus of rupture	ASTM C99	1,374 Psi	9.47 MPa



Seongsu 14-35
Seoul, KOR



Museum of Modern Art
Manhattan, NY, USA



SAINT HENRY BLACK™

Granite



 QUÉBEC, CAN

Port of origin: Montréal, QC, CAN

Characteristics:

- Consistent background color
- True deep black color
- Defined crystal-like grain

		IMPERIAL	METRIC
Absorption by weight	ASTM C97	0.056%	0.056%
Density	ASTM C97	177.2 lb/ft ³	2,838.47 kg/m ³
Compressive strength	ASTM C170	22,242 Psi	153.36 MPa
Flexural strength	ASTM C880	1,769 Psi	12.2 MPa
Modulus of rupture	ASTM C99	1,929 Psi	13.30 MPa



Empire State Building
New York, NY, USA



Museum Reinhard Ernst
Frankfurt, GER



Non-Hyeon Residence
Seoul, KOR



Architects: Alain Moatti et Mineral Expertise

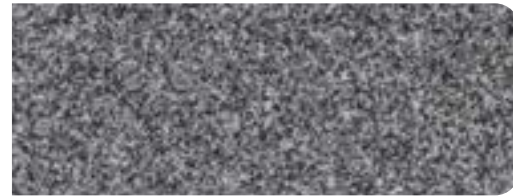
Hôtel de la Marine
Paris, FRA



ADNOC Headquarters & Emirates Palace
Abu Dhabi, UAE

ALSO AVAILABLE *for export*

BARRE GRAY™
Granite



GEORGIA MARBLE™ - WHITE CHEROKEE™
Marble



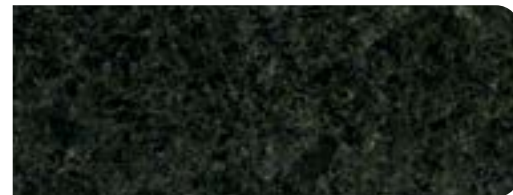
INDIANA LIMESTONE - GRAY™
Limestone



INDIANA LIMESTONE - SILVER BUFF™
Limestone



LAURENTIAN GREEN™
Granite



MAYBERRY MIST™
Granite



PICASSO™
Granite





Polycor Inc. products are natural. Subtle variations in color and texture do occur and are part of what makes natural stone unique and attractive. We cannot guarantee an exact match to any of the photographic images contained in this brochure. Polycor Inc.'s continuing attention to product improvement may result in product specifications, technical information, and availability being subject to change without notice.

© 2026 Polycor Inc. All Rights Reserved.



Scan this QR Code to find
a stone expert in your region.

polycor.com

Contact Us



European Sales: Jeff Lemieux - 1.418.575.2615

Asian Sales: Wonho Shin - +82 10 9463 3737

Our natural stones are quarried and
processed in the Canada and USA.

Proud member
of the NSI

